

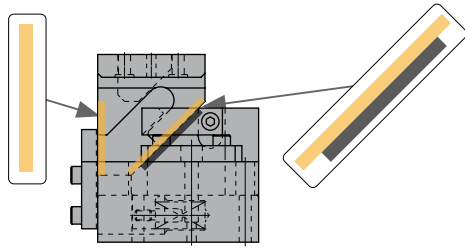


LKCM-LKBM

Die mounted cam for pierce and flange

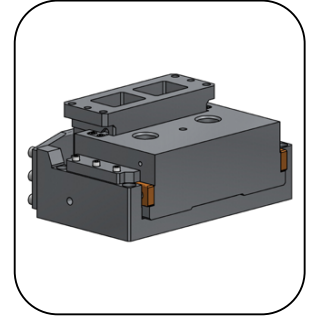
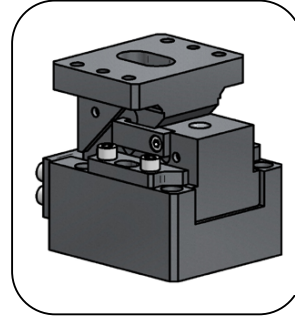
General information

* - LKBM available



SLIDING PLATES ON DRIVER

- Die mounted cam.
- Angles from 0° to 20° with increments of 5°.
- 0° Horizontal cam.

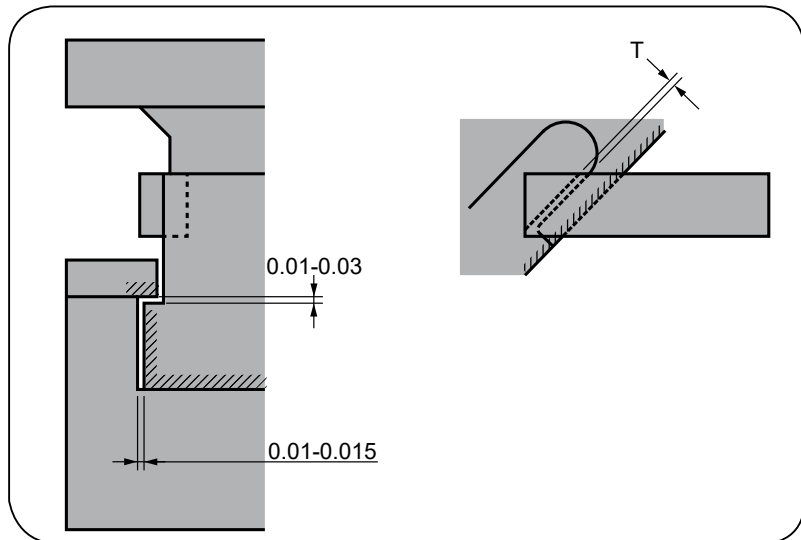


- LKCM 0052*
- LKCM 0065*
- LKCM 0100*
- LKCM 0150*
- LKCM 0200*
- LKCM 0250*
- LKCM 0300*

- LKCM 0400*
- LKCM 0500
- LKCM 0600

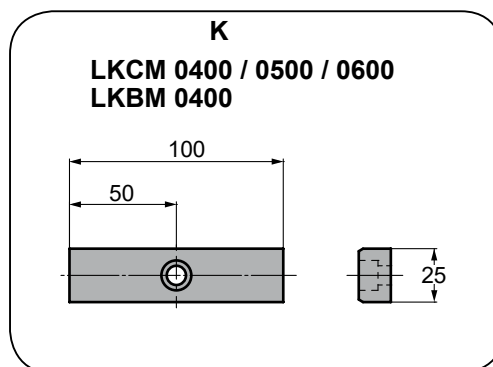
Adjustment clearances

- | | |
|-----------|-----------|
| LKCM 0052 | LKBM 0052 |
| LKCM 0065 | LKBM 0065 |
| LKCM 0100 | LKBM 0100 |
| LKCM 0150 | LKBM 0150 |
| LKCM 0200 | LKBM 0200 |
| LKCM 0250 | LKBM 0250 |
| LKCM 0300 | LKBM 0300 |
| LKCM 0400 | LKBM 0400 |
| LKCM 0500 | |
| LKCM 0600 | |



- T: 1,5 mm clearance for 52mm and 65mm width and 2 mm for 100mm width or more.

Keys



LKCM-LKBM

Die mounted cam for pierce and flange



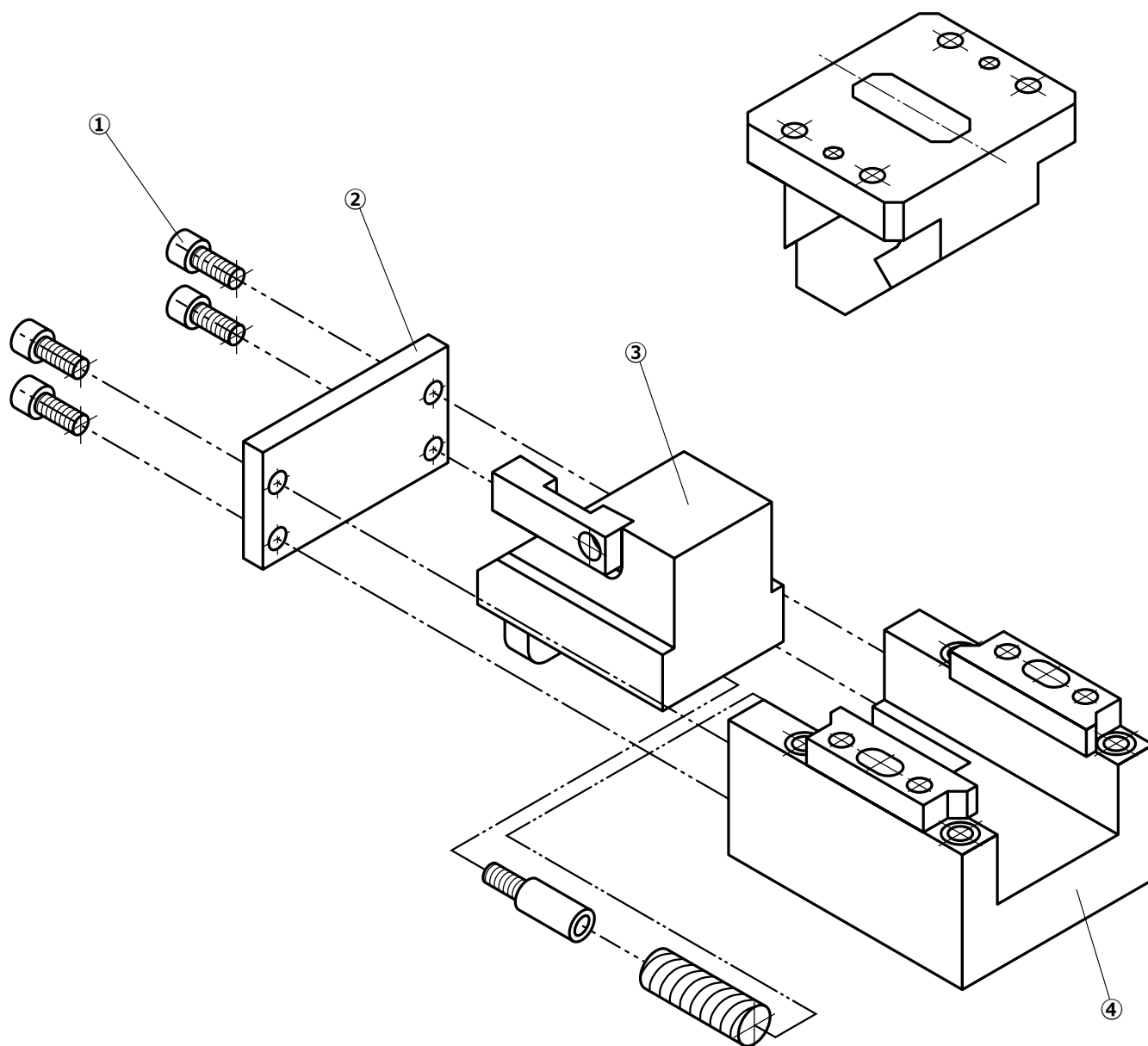
Assembling and disassembling

Disassembling process

- Unscrew ① pieces and remove ② stopper plate.
- Remove ③ cam slider from ④ cam holder.

Assembling process

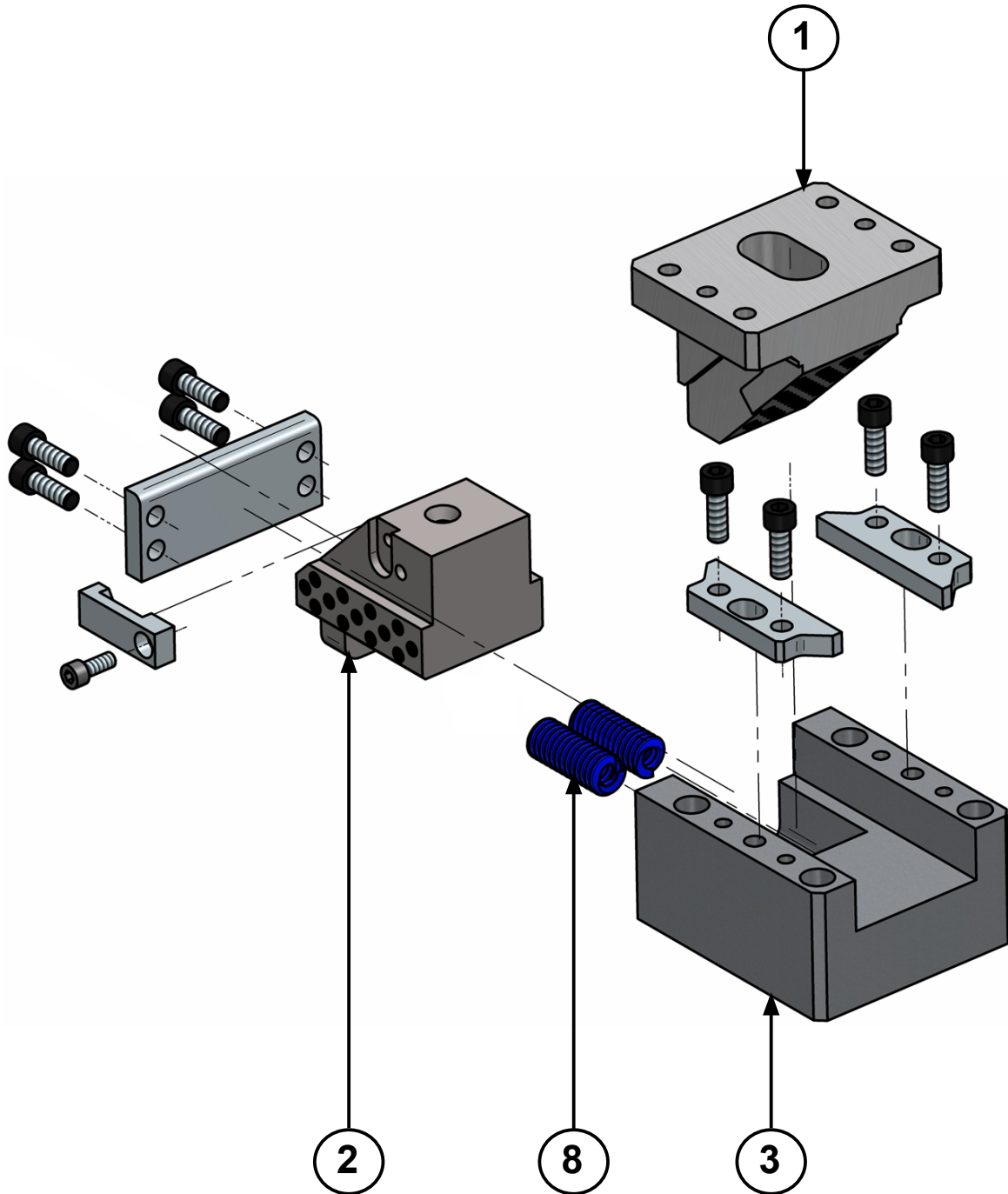
- Make sure that there are no metal shaving or impurities.
- The clearance between the cam holder and slider is controlled.
- Match the serial numbers marked in each part before assembly.
- Make sure that all the screws have been used.





LKCM 0052 - LKBM 0052

Die mounted cam for pierce and flange

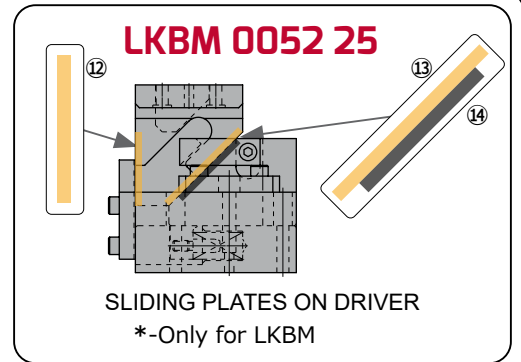
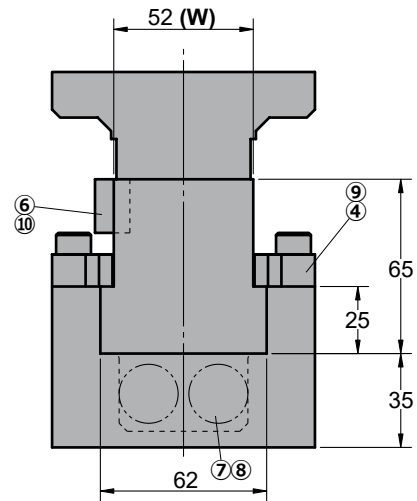
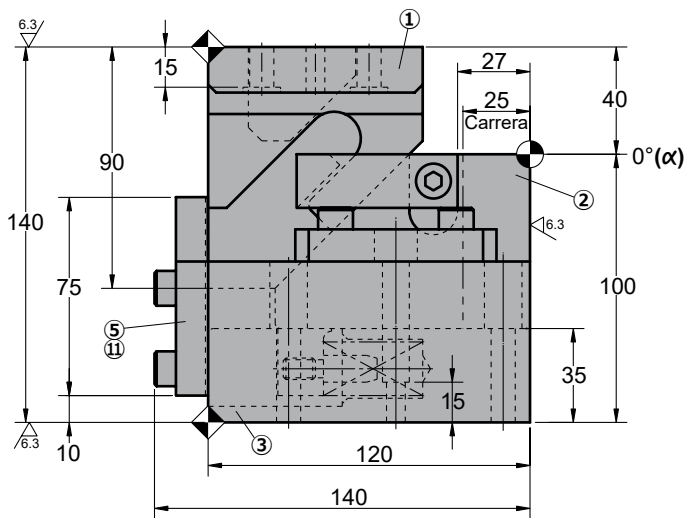
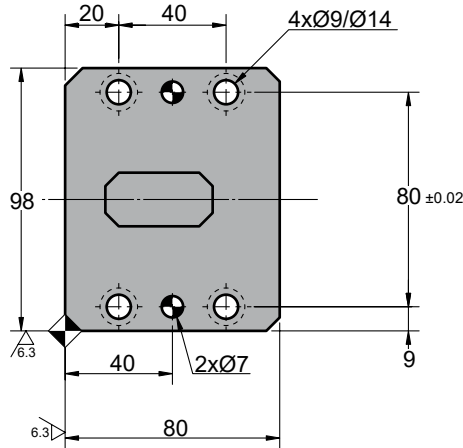


LKCM 0052 - LKBM 0052

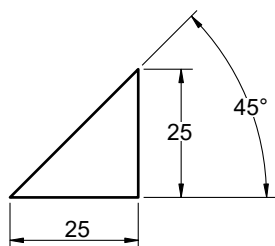
Die mounted cam for pierce and flange



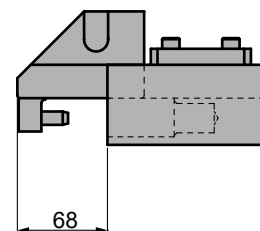
LKCM 0052 25



Cam diagram:



Disassembling space:





LKCM 0052 - LKBM 0052

Die mounted cam for pierce and flange

Working force kN - (tons)		Spring Force N - (kgf)		Weight (Kg)	Model	W (mm)	Stroke (mm)
(1 Million Strokes)	(300.000 Strokes)	Initial F ₀	Final F ₁				
14.7 (1.5)	29.4 (3.0)	144.0 (14.7)	595.3 (60.7)	8.0	LKCM LKBM	0052	25

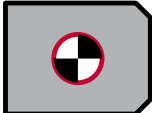


Order: Model (W) (Stroke)

LKCM 0052 25

Standard order example according to catalog sheet. Add options applying options table contents.

OPTIONS

	<p>P PINS</p>  <p>P8 - Ø8 H7</p>

Order Options: Model (W) (Stroke) -Option



LKCM 0052 25-P8

LKBM 0052 25-P8



SPARE PARTS:

- ⑧ Coil Spring
- ⑫ Sliding plate 1
- ⑬ Sliding plate 2
- ⑭ Sliding plate 3

COMPONENTS

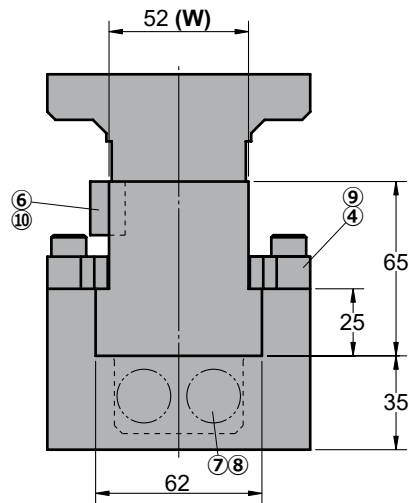
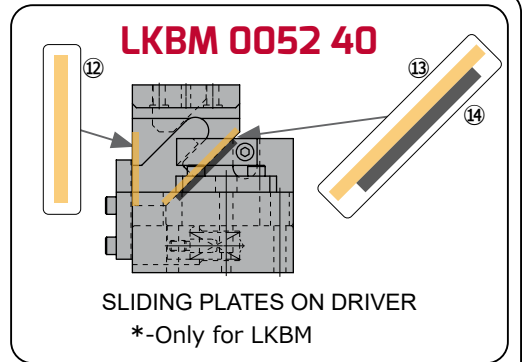
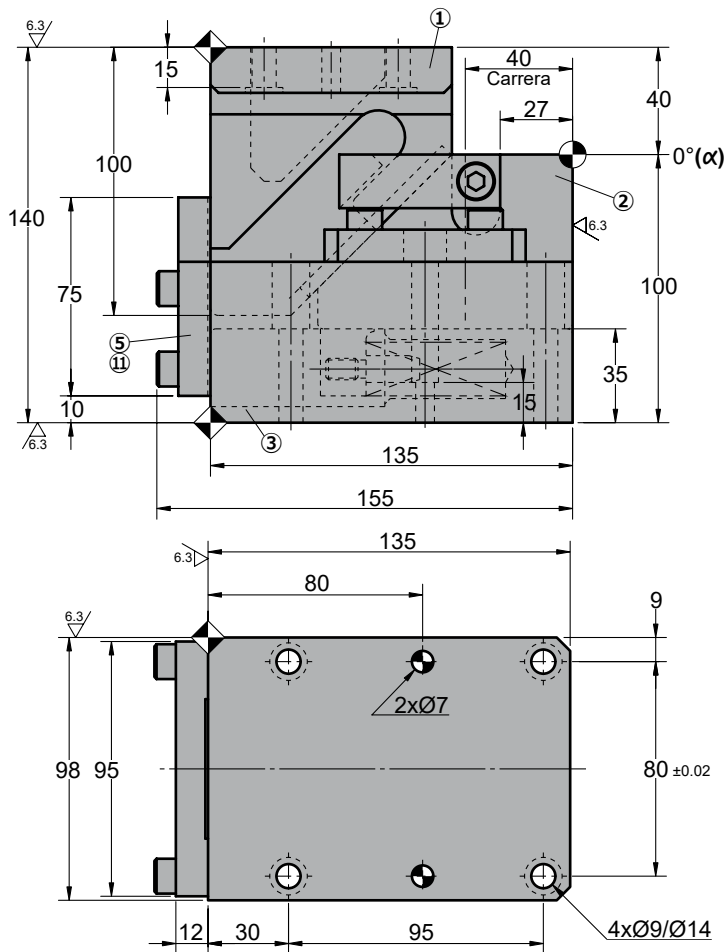
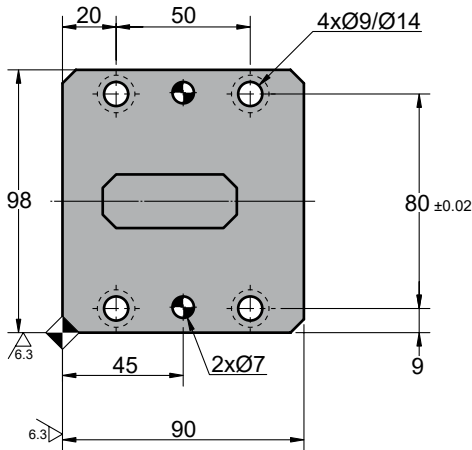
No.	Description	Qty.	Material
①	Cam Driver	1	GGG50 + G
②	Cam Slider	1	GGG50 + G
③	Cam Holder	1	GG25
④	Upper Plate	2	GG25
⑤	Stopper Plate	1	CK45
⑥	Positive Return	1	CK45
⑦	Spring Guide	2	CK45
⑧	Coil Spring	2	TF20-70
⑨	Screw	4	M8 x 25
⑩	Screw	1	M8 x 20
⑪	Screw	4	M8 x 30
*⑫	Sliding plate 1	1	Bronze + G
*⑬	Sliding plate 2	1	Bronze + G
*⑭	Sliding plate 3	1	CK45

LKCM 0052 - LKBM 0052

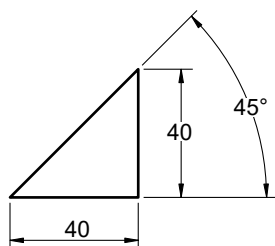
Die mounted cam for pierce and flange



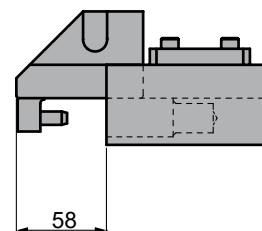
LKCM 0052 40



Cam diagram:



Disassembling space:





LKCM 0052 - LKBM 0052

Die mounted cam for pierce and flange


Working force kN - (tons)		Spring Force N - (kgf)		Weight (Kg)	Model	W (mm)	Stroke (mm)
(1 Million Strokes)	(300.000 Strokes)	Initial F ₀	Final F ₁				
14.7 (1.5)	29.4 (3.0)	100.8 (10.2)	605.8 (61.4)	8.0	LKCM LKBM	0052	40



Order: Model (W) (Stroke)
LKCM 0052 40

Standard order example according to catalog sheet.
 Add options applying options table contents.

OPTIONS

	<p>P PINS</p>  <p>P8 - Ø8 H7</p>

Order Options: Model (W) (Stroke) -Option



LKCM 0052 40-P8
LKBM 0052 40-P8



SPARE PARTS:

- ⑧ Coil Spring
- ⑫ Sliding plate 1
- ⑬ Sliding plate 2
- ⑭ Sliding plate 3

COMPONENTS

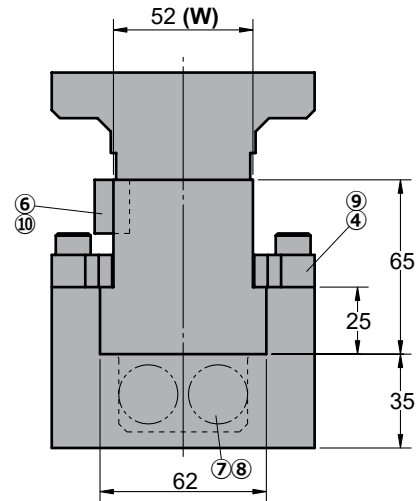
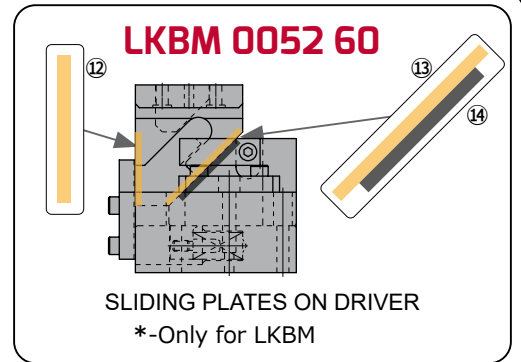
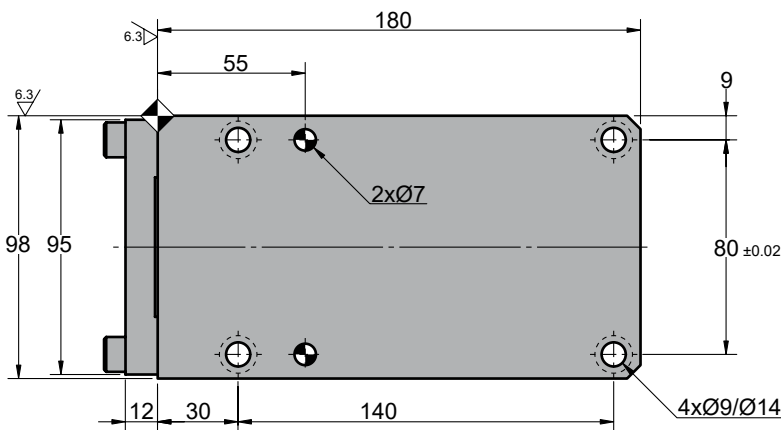
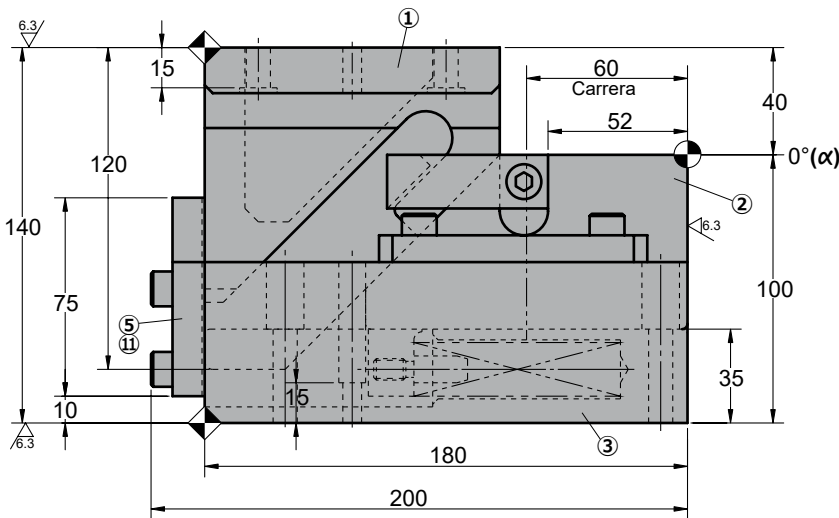
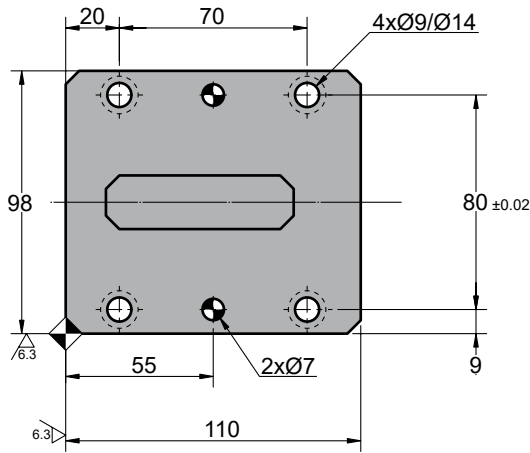
No.	Description	Qty.	Material
①	Cam Driver	1	GGG50 + G
②	Cam Slider	1	GGG50 + G
③	Cam Holder	1	GG25
④	Upper Plate	2	GG25
⑤	Stopper Plate	1	CK45
⑥	Positive Return	1	CK45
⑦	Spring Guide	2	CK45
⑧	Coil Spring	2	TF20-100
⑨	Screw	4	M8 x 25
⑩	Screw	1	M8 x 20
⑪	Screw	4	M8 x 30
*⑫	Sliding plate 1	1	Bronze + G
*⑬	Sliding plate 2	1	Bronze + G
*⑭	Sliding plate 3	1	CK45

LKCM 0052 - LKBM 0052

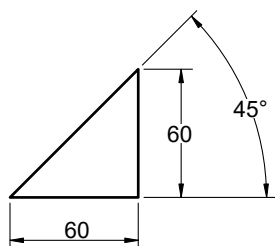
Die mounted cam for pierce and flange



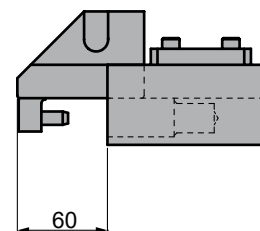
LKCM 0052 60



Cam diagram:



Disassembling space:





LKCM 0052 - LKBM 0052

Die mounted cam for pierce and flange

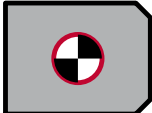
Working force kN - (tons)		Spring Force N - (kgf)		Weight (Kg)	Model	W (mm)	Stroke (mm)
(1 Million Strokes)	(300.000 Strokes)	Initial F ₀	Final F ₁				
14.7 (1.5)	29.4 (3.00)	109.2 (11.2)	614.7 (62.8)	14.0	LKCM LKBM	0052	60



Order: Model (W) (Stroke)
LKCM 0052 60

Standard order example according to catalog sheet.
 Add options applying options table contents.

OPTIONS

	<p>P PINS</p>  <p>P8 - Ø8 H7</p>

Order Options: Model (W) (Stroke) -Option



LKCM 0052 60-P8
LKBM 0052 60-P8



SPARE PARTS:

- ⑧ Coil Spring
- ⑫ Sliding plate 1
- ⑬ Sliding plate 2
- ⑭ Sliding plate 3

COMPONENTS

No.	Description	Qty.	Material
①	Cam Driver	1	GGG50 + G
②	Cam Slider	1	GGG50 + G
③	Cam Holder	1	GG25
④	Upper Plate	2	GG25
⑤	Stopper Plate	1	CK45
⑥	Positive Return	1	CK45
⑦	Spring Guide	2	CK45
⑧	Coil Spring	2	TF20-150
⑨	Screw	4	M8 x 25
⑩	Screw	1	M8 x 20
⑪	Screw	4	M8 x 30
*⑫	Sliding plate 1	1	Bronze + G
*⑬	Sliding plate 2	1	Bronze + G
*⑭	Sliding plate 3	1	CK45

LKCM 0052 - LKBM 0052

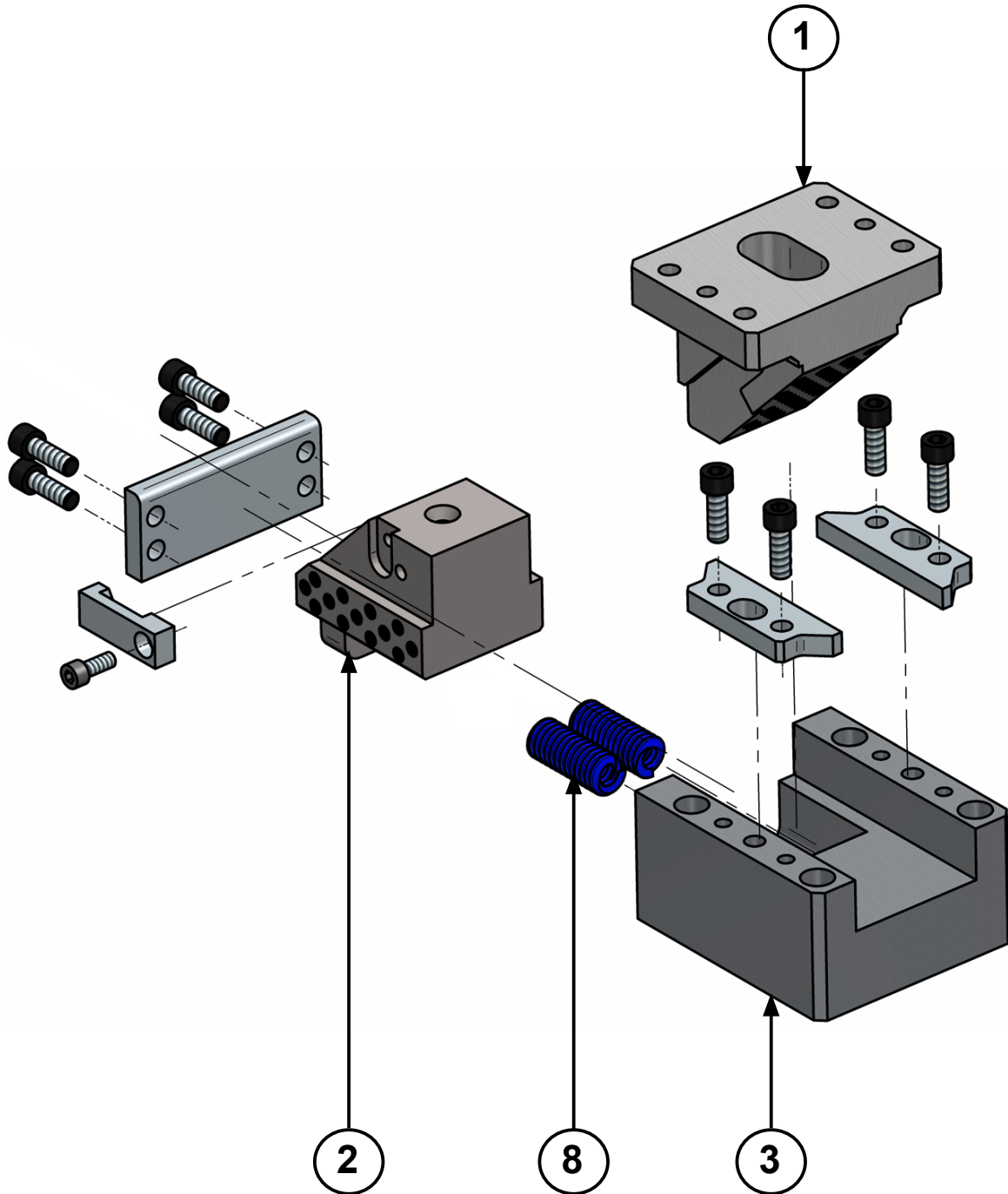


Die mounted cam for pierce and flange



LKCM 0065 - LKBM 0065

Die mounted cam for pierce and flange

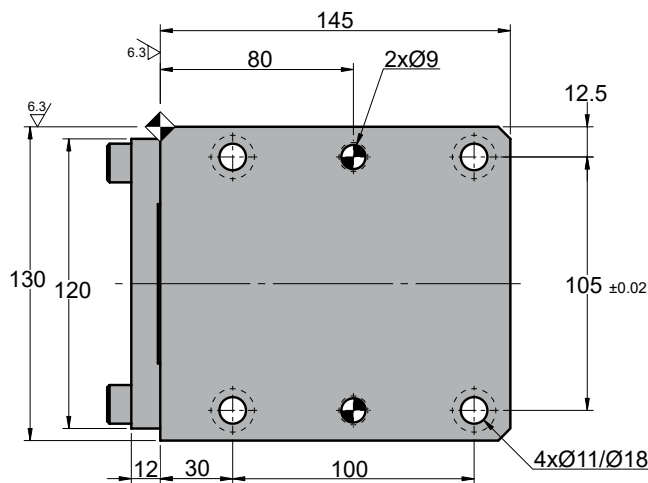
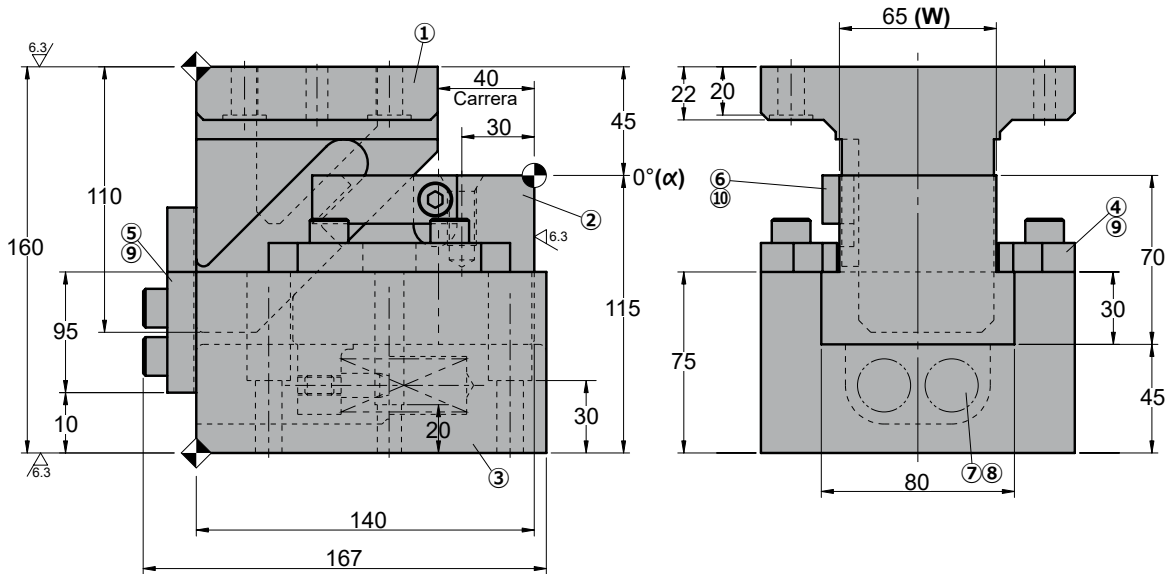
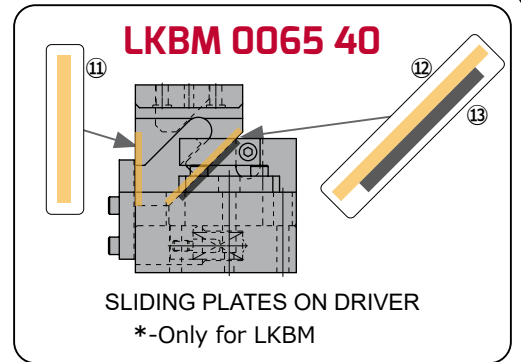
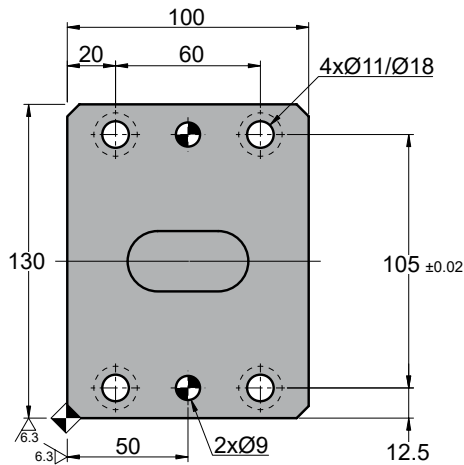


LKCM 0065 - LKBM 0065

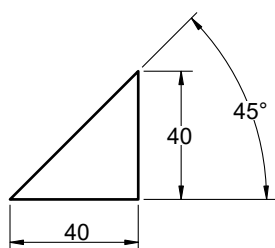
Die mounted cam for pierce and flange



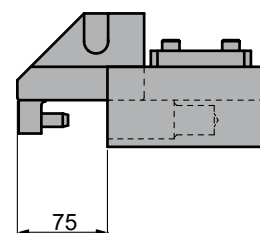
LKCM 0065 40



Cam diagram:



Disassembling space:





LKCM 0065 - LKBM 0065

Die mounted cam for pierce and flange

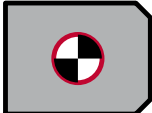
Working force kN - (tons)		Spring Force N - (kgf)		Weight (Kg)	Model	W (mm)	Stroke (mm)
(1 Million Strokes)	(300.000 Strokes)	Initial F ₀	Final F ₁				
19.6 (2.0)	39.2 (4.0)	124.8 (12.8)	752.6 (76.8)	20.0	LKCM LKBM	0065	40



Order: Model (W) (Stroke)
LKCM 0065 40

Standard order example according to catalog sheet.
 Add options applying options table contents.

OPTIONS

	<p>P PINS</p>  <p>P10 - Ø10 H7</p>

Order Options: Model (W) (Stroke) -Option



LKCM 0065 40-P10
LKBM 0065 40-P10



SPARE PARTS:

- ⑧ Coil Spring
- ⑪ Sliding plate 1
- ⑫ Sliding plate 2
- ⑬ Sliding plate 3

COMPONENTS

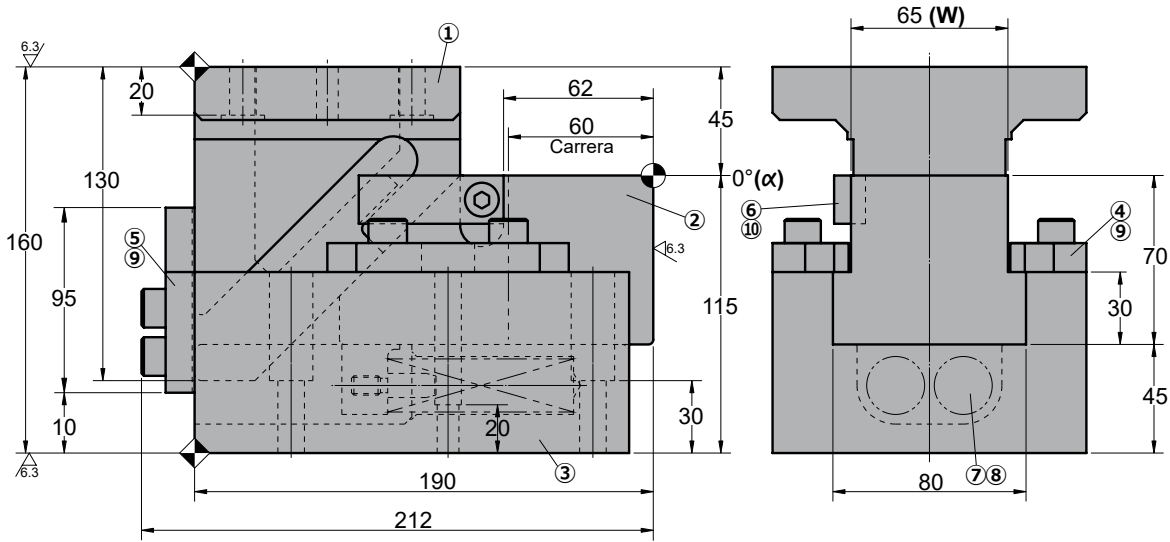
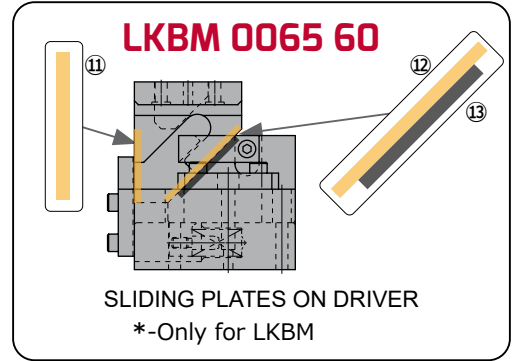
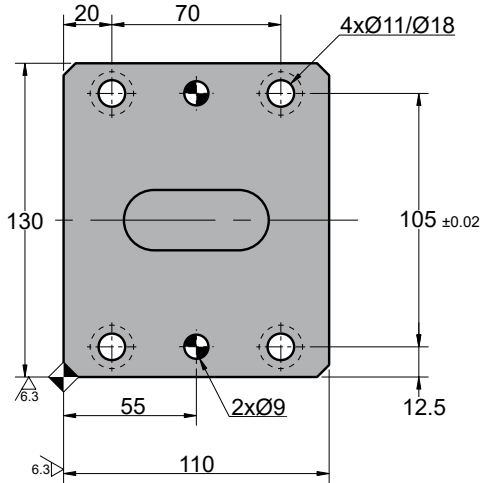
No.	Description	Qty.	Material
①	Cam Driver	1	GGG50 + G
②	Cam Slider	1	GGG50 + G
③	Cam Holder	1	GG25
④	Upper Plate	2	GG25
⑤	Stopper Plate	1	CK45
⑥	Positive Return	1	CK45
⑦	Spring Guide	2	CK45
⑧	Coil Spring	2	TF22-100
⑨	Screw	8	M10 x 30
⑩	Screw	1	M8 x 20
*⑪	Sliding plate 1	1	Bronze + G
*⑫	Sliding plate 2	1	Bronze + G
*⑬	Sliding plate 3	1	CK45

LKCM 0065 - LKBM 0065

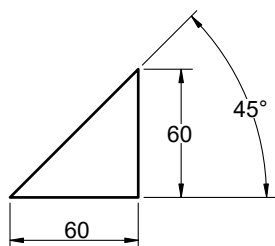
Die mounted cam for pierce and flange



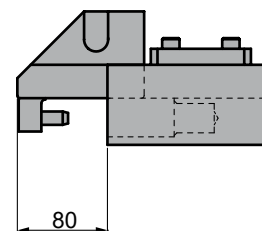
LKCM 0065 60



Cam diagram:



Disassembling space:





LKCM 0065 - LKBM 0065

Die mounted cam for pierce and flange


Working force kN - (tons)		Spring Force N - (kgf)		Weight (Kg)	Model	W (mm)	Stroke (mm)
(1 Million Strokes)	(300.000 Strokes)	Initial F ₀	Final F ₁				
19.6 (2.0)	39.2 (4.0)	135.2 (13.8)	763.6 (77.4)	21.0	LKCM LKBM	0065	60



Order: Model (W) (Stroke)
LKCM 0065 60

Standard order example according to catalog sheet.
 Add options applying options table contents.

OPTIONS

	<p>P PINS</p>  <p>P10 - Ø10 H7</p>

Order Options: Model (W) (Stroke) -Option



LKCM 0065 60-P10
LKBM 0065 60-P10



SPARE PARTS:

- ⑧ Coil Spring
- ⑪ Sliding plate 1
- ⑫ Sliding plate 2
- ⑬ Sliding plate 3

COMPONENTS

No.	Description	Qty.	Material
①	Cam Driver	1	GGG50 + G
②	Cam Slider	1	GGG50 + G
③	Cam Holder	1	GG25
④	Upper Plate	2	GG25
⑤	Stopper Plate	1	CK45
⑥	Positive Return	1	CK45
⑦	Spring Guide	2	CK45
⑧	Coil Spring	2	TF22-150
⑨	Screw	8	M10 x 30
⑩	Screw	1	M8 x 20
*⑪	Sliding plate 1	1	Bronze + G
*⑫	Sliding plate 2	1	Bronze + G
*⑬	Sliding plate 3	1	CK45

LKCM 0065 - LKBM 0065

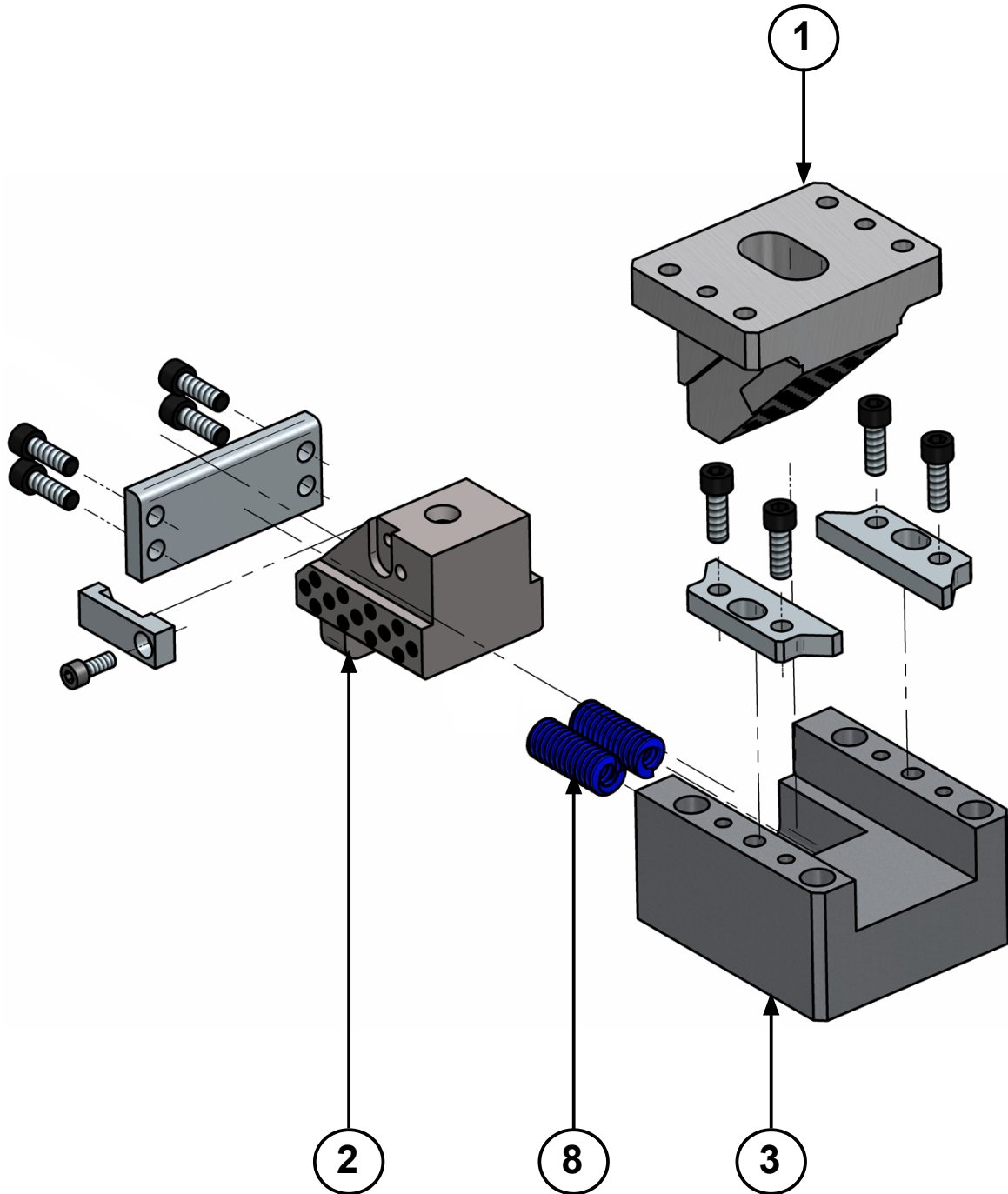


Die mounted cam for pierce and flange



LKCM 0100 - LKBM 0100

Die mounted cam for pierce and flange

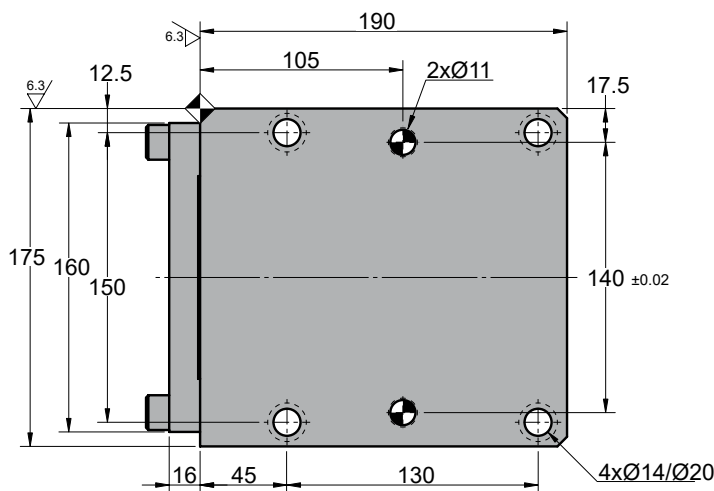
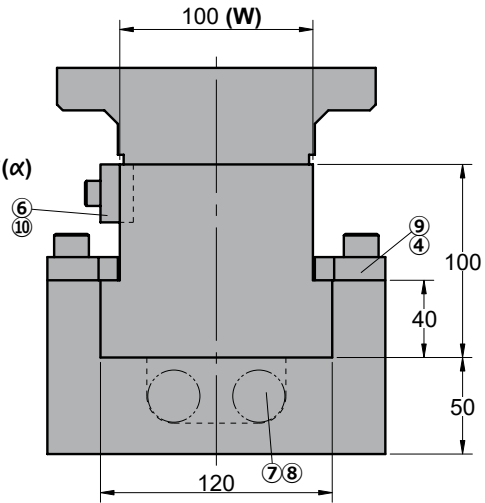
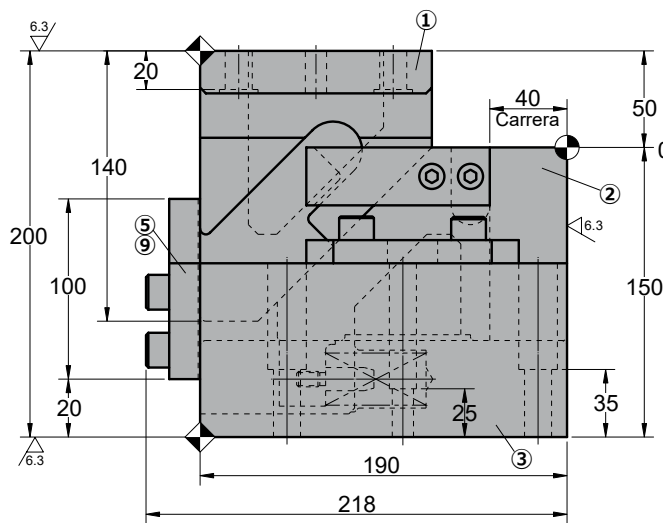
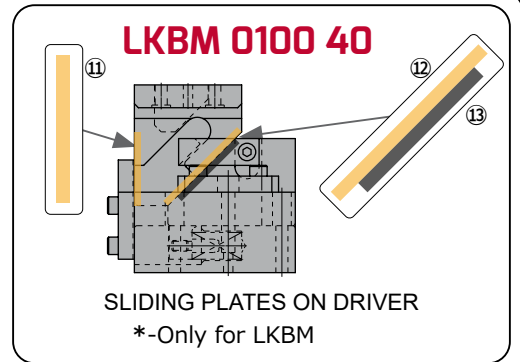
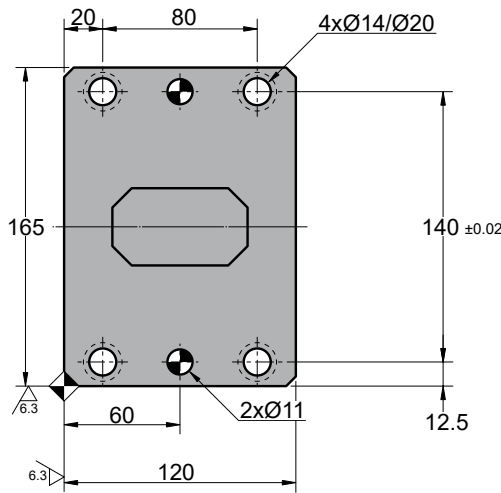


LKCM 0100 - LKBM 0100

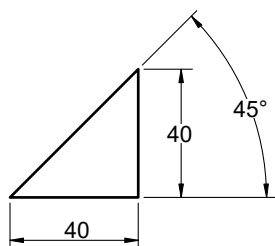
Die mounted cam for pierce and flange



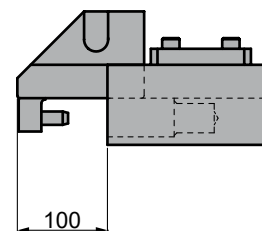
LKCM 0100 40



Cam diagram:



Disassembling space:





LKCM 0100 - LKBM 0100

Die mounted cam for pierce and flange


Working force kN - (tons)		Spring Force N - (kgf)		Weight (Kg)	Model	W (mm)	Stroke (mm)
(1 Million Strokes)	(300.000 Strokes)	Initial F ₀	Final F ₁				
29.4 (3.0)	58.8 (6.0)	188.8 (19.2)	1130.9 (115.2)	37.0	LKCM LKBM	0100	40



Order: Model (W) (Stroke)
LKCM 0100 40

Standard order example according to catalog sheet.
 Add options applying options table contents.

OPTIONS

	<p>P PINS</p>  <p>P13 - Ø13 H7 P12 - Ø12 H7</p>

Order Options: Model (W) (Stroke) -Option



LKCM 0100 40-P13
LKBM 0100 40-P13



SPARE PARTS:

- ⑧ Coil Spring
- ⑪ Sliding plate 1
- ⑫ Sliding plate 2
- ⑬ Sliding plate 3

COMPONENTS

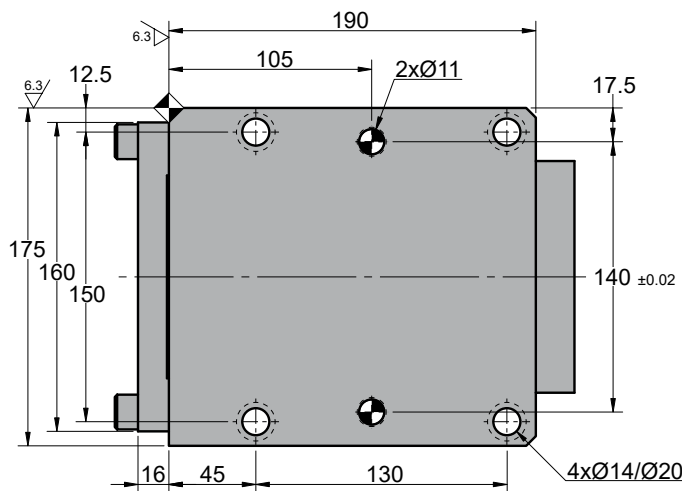
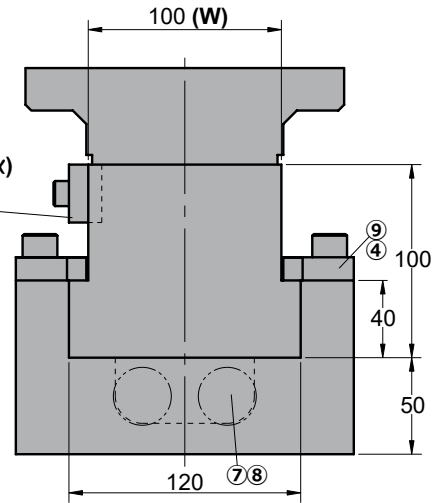
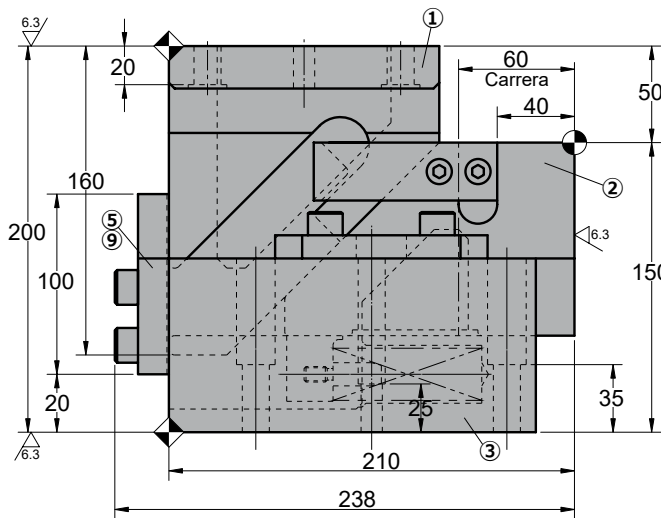
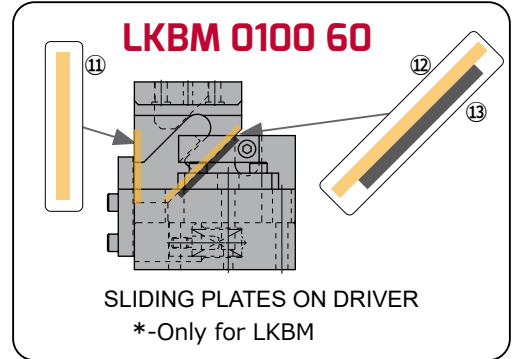
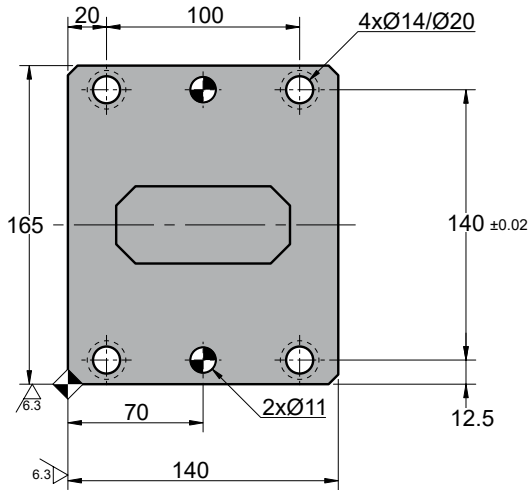
No.	Description	Qty.	Material
①	Cam Driver	1	GGG50 + G
②	Cam Slider	1	GGG50 + G
③	Cam Holder	1	GG25
④	Upper Plate	2	GG25
⑤	Stopper Plate	1	CK45
⑥	Positive Return	1	CK45
⑦	Spring Guide	2	CK45
⑧	Coil Spring	2	TF27-100
⑨	Screw	8	M12 x 35
⑩	Screw	2	M8 x 30
*⑪	Sliding plate 1	1	Bronze + G
*⑫	Sliding plate 2	1	Bronze + G
*⑬	Sliding plate 3	1	CK45

LKCM 0100 - LKBM 0100

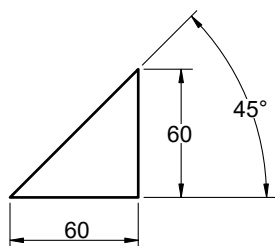
Die mounted cam for pierce and flange



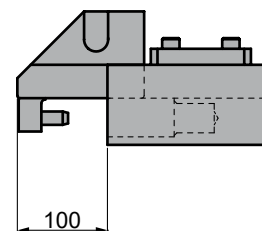
LKCM 0100 60



Cam diagram:



Disassembling space:





LKCM 0100 - LKBM 0100

Die mounted cam for pierce and flange

Working force kN - (tons)		Spring Force N - (kgf)		Weight (Kg)	Model	W (mm)	Stroke (mm)
(1 Million Strokes)	(300.000 Strokes)	Initial F ₀	Final F ₁				
29.4 (3.0)	59.8 (6.0)	202.8 (20.8)	1146.1 (116.8)	38.0	LKCM LKBM	0100	60

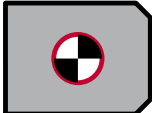


Order: Model (W) (Stroke)

LKCM 0100 60

Standard order example according to catalog sheet. Add options applying options table contents.

OPTIONS

	<p>P PINS</p>  <p>P13 - Ø13 H7 P12 - Ø12 H7</p>

Order Options: Model (W) (Stroke) -Option



LKCM 0100 60-P13

LKBM 0100 60-P13



SPARE PARTS:

- ⑧ Coil Spring
- ⑪ Sliding plate 1
- ⑫ Sliding plate 2
- ⑬ Sliding plate 3

COMPONENTS

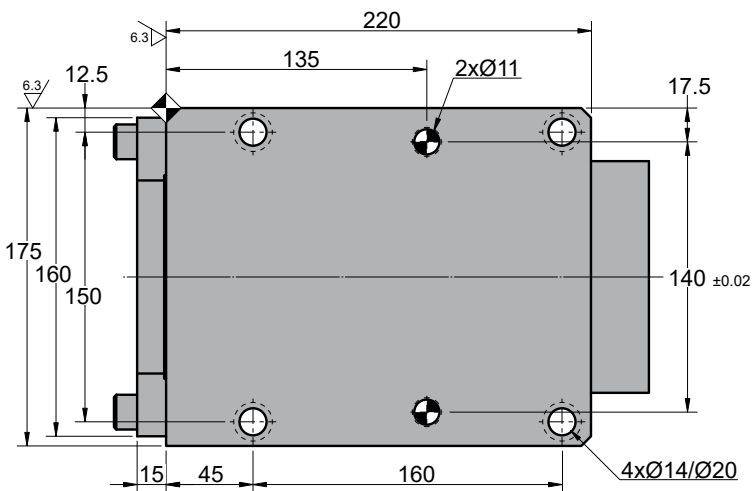
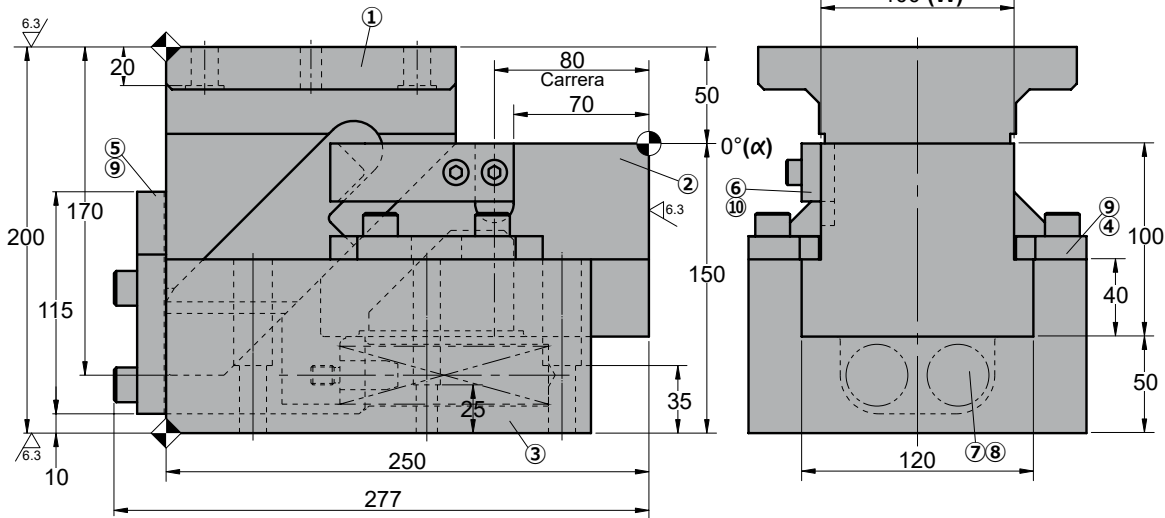
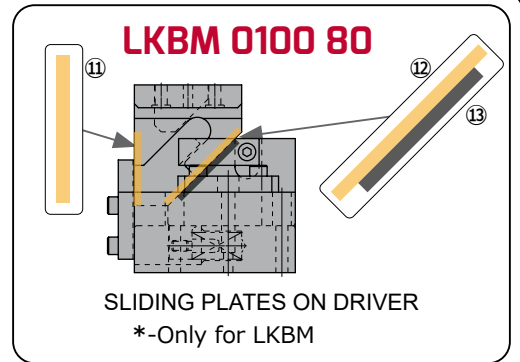
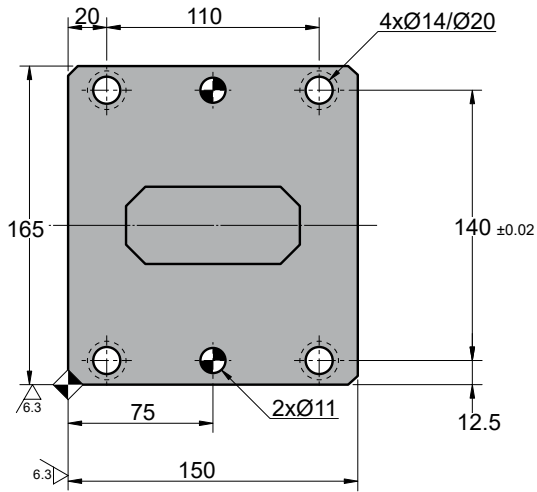
No.	Description	Qty.	Material
①	Cam Driver	1	GGG50 + G
②	Cam Slider	1	GGG50 + G
③	Cam Holder	1	GG25
④	Upper Plate	2	GG25
⑤	Stopper Plate	1	CK45
⑥	Positive Return	1	CK45
⑦	Spring Guide	2	CK45
⑧	Coil Spring	2	TF27-150
⑨	Screw	8	M12 x 35
⑩	Screw	2	M8 x 30
*⑪	Sliding plate 1	1	Bronze + G
*⑫	Sliding plate 2	1	Bronze + G
*⑬	Sliding plate 3	1	CK45

LKCM 0100 - LKBM 0100

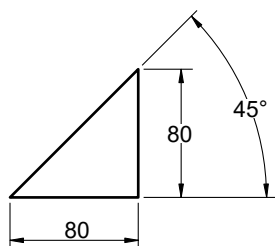
Die mounted cam for pierce and flange



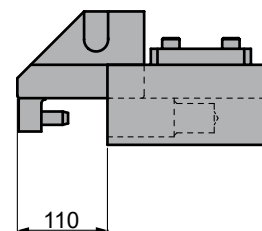
LKCM 0100 80



Cam diagram:



Disassembling space:





LKCM 0100 - LKBM 0100

Die mounted cam for pierce and flange

Working force kN - (tons)		Spring Force N - (kgf)		Weight (Kg)	Model	W (mm)	Stroke (mm)
(1 Million Strokes)	(300.000 Strokes)	Initial F ₀	Final F ₁				
29.4 (3.0)	58.8 (6.0)	170.4 (17.3)	1302.7 (132.5)	44.0	LKCM LKBM	0100	80

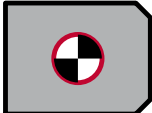


Order: Model (W) (Stroke)

LKCM 0100 80

Standard order example according to catalog sheet. Add options applying options table contents.

OPTIONS

	<p>P PINS</p>  <p>P13 - Ø13 H7 P12 - Ø12 H7</p>

Order Options: Model (W) (Stroke) -Option



LKCM 0100 80-P13

LKBM 0100 80-P13



SPARE PARTS:

- ⑧ Coil Spring
- ⑪ Sliding plate 1
- ⑫ Sliding plate 2
- ⑬ Sliding plate 3

COMPONENTS

No.	Description	Qty.	Material
①	Cam Driver	1	GGG50 + G
②	Cam Slider	1	GGG50 + G
③	Cam Holder	1	GG25
④	Upper Plate	2	GG25
⑤	Stopper Plate	1	CK45
⑥	Positive Return	1	CK45
⑦	Spring Guide	2	CK45
⑧	Coil Spring	2	TF30-200
⑨	Screw	8	M12 x 35
⑩	Screw	2	M8 x 30
*⑪	Sliding plate 1	1	Bronze + G
*⑫	Sliding plate 2	1	Bronze + G
*⑬	Sliding plate 3	1	CK45

LKCM 0100 - LKBM 0100

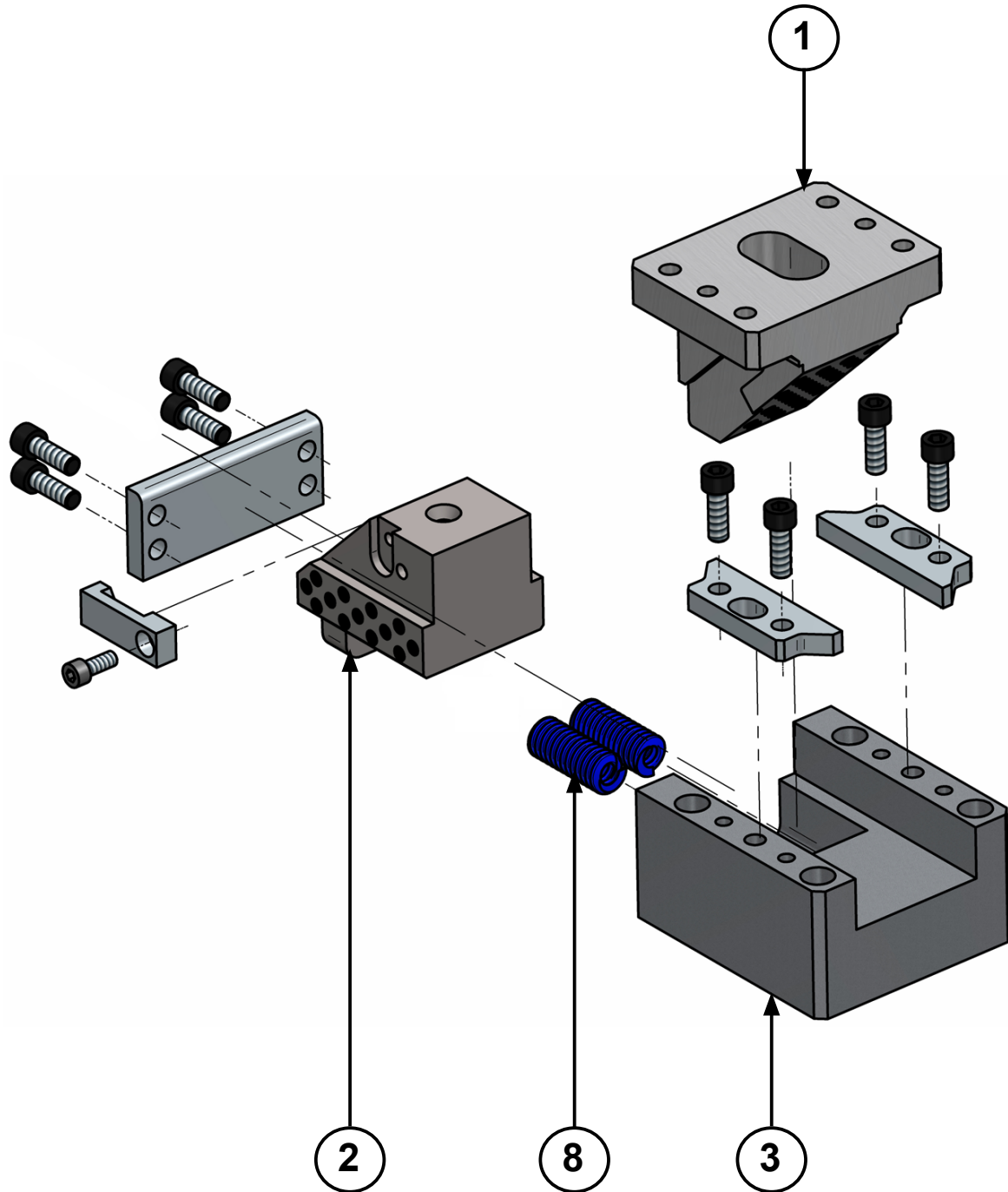


Die mounted cam for pierce and flange



LKCM 0150 - LKBM 0150

Die mounted cam for pierce and flange

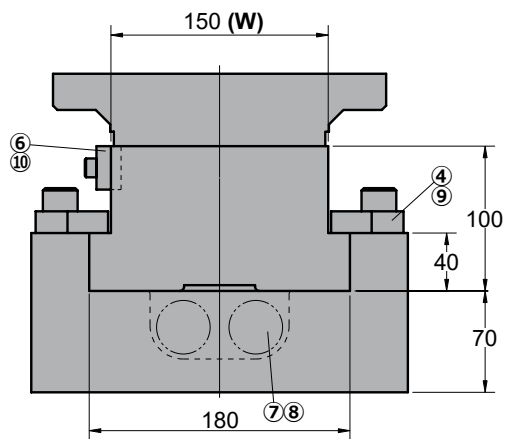
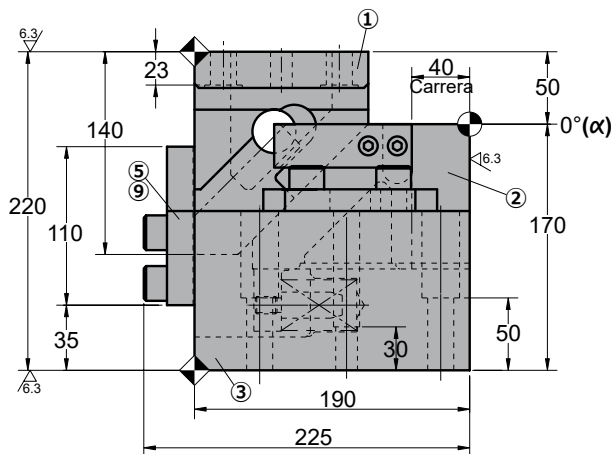
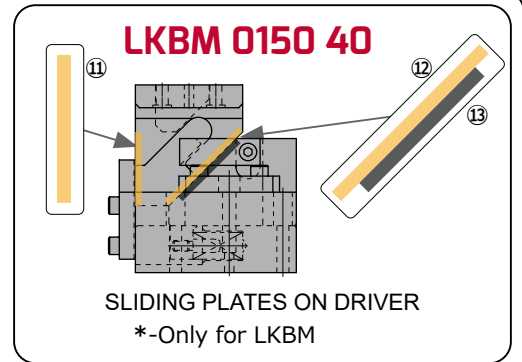
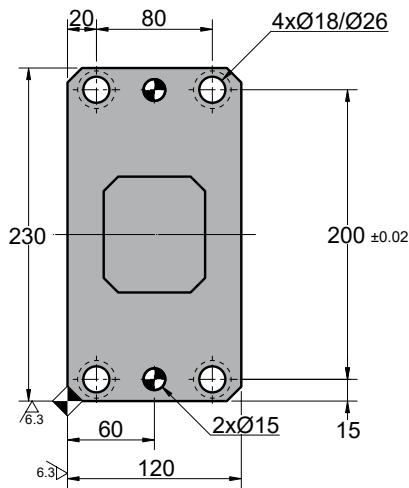


LKCM 0150 - LKBM 0150

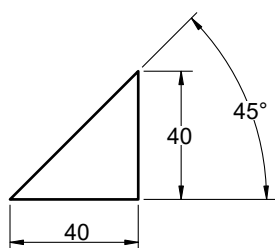
Die mounted cam for pierce and flange



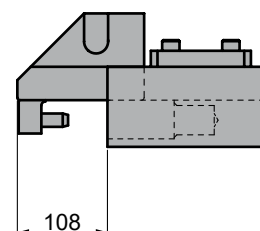
LKCM 0150 40



Cam diagram:



Disassembling space:





LKCM 0150 - LKBM 0150

Die mounted cam for pierce and flange

Working force kN - (tons)		Spring Force N - (kgf)		Weight (Kg)	Model	W (mm)	Stroke (mm)
(1 Million Strokes)	(300.000 Strokes)	Initial F ₀	Final F ₁				
58.8 (6.0)	88.2 (9.0)	307.2 (31.4)	1841.3 (188.2)	63.0	LKCM	0150	40
					LKBM		

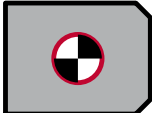


Order: Model (W) (Stroke)

LKCM 0150 40

Standard order example according to catalog sheet. Add options applying options table contents.

OPTIONS

	<p>P PINS</p>  <p>P16 - Ø16 H7</p>

Order Options: Model (W) (Stroke) -Option



LKCM 0150 40-P16

LKBM 0150 40-P16



SPARE PARTS:

- ⑧ Coil Spring
- ⑪ Sliding plate 1
- ⑫ Sliding plate 2
- ⑬ Sliding plate 3

COMPONENTS

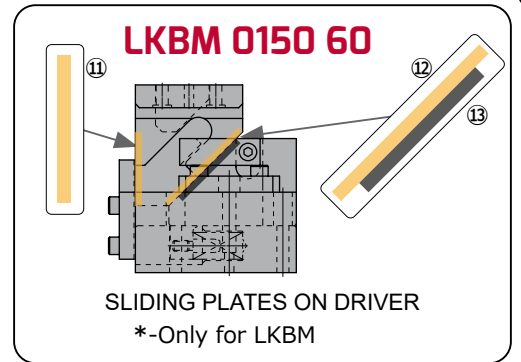
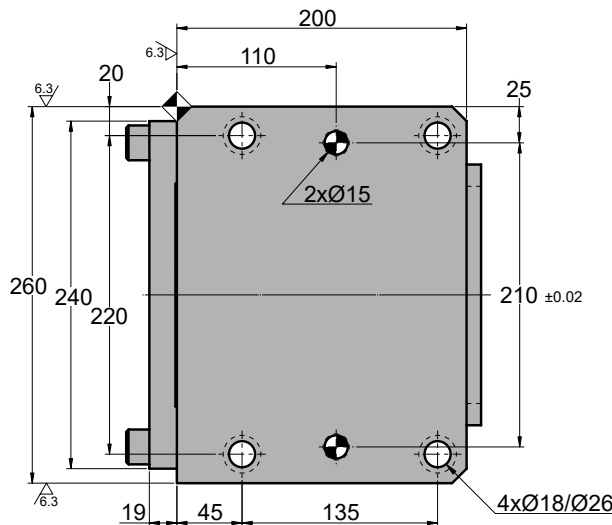
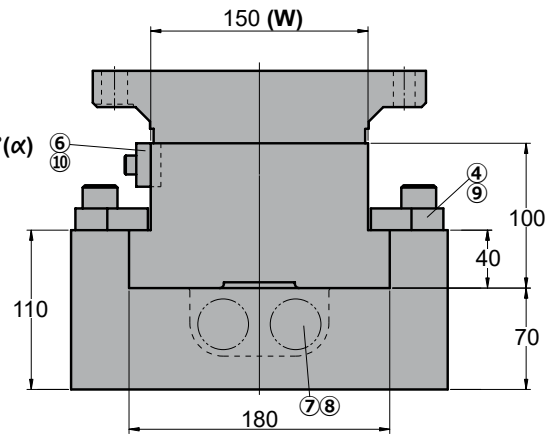
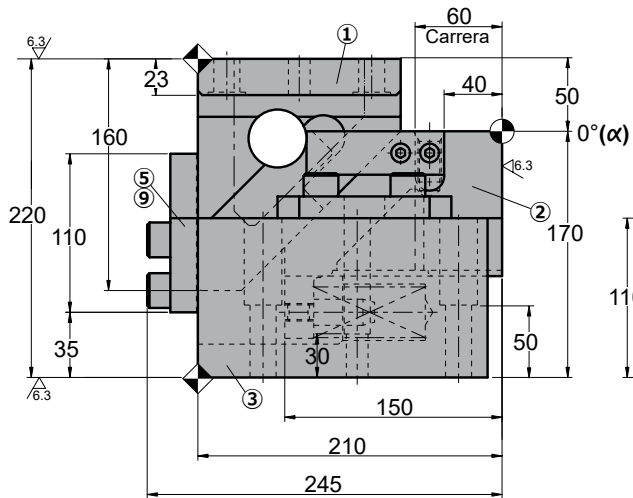
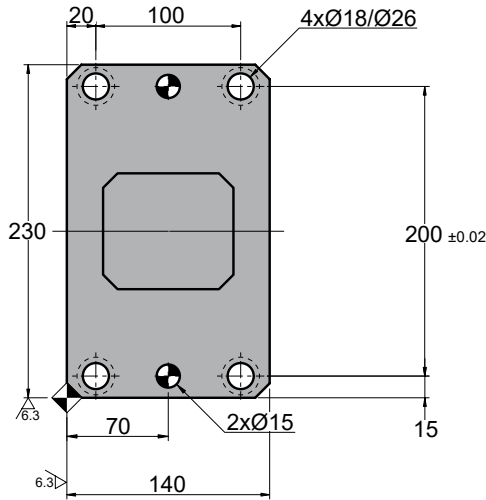
No.	Description	Qty.	Material
①	Cam Driver	1	GGG50 + G
②	Cam Slider	1	GGG50 + G
③	Cam Holder	1	GG25
④	Upper Plate	2	GG25
⑤	Stopper Plate	1	CK45
⑥	Positive Return	1	CK45
⑦	Spring Guide	2	CK45
⑧	Coil Spring	2	TF35-100
⑨	Screw	8	M16 x 45
⑩	Screw	2	M8 x 30
*⑪	Sliding plate 1	2	Bronze + G
*⑫	Sliding plate 2	2	Bronze + G
*⑬	Sliding plate 3	2	CK45

LKCM 0150 - LKBM 0150

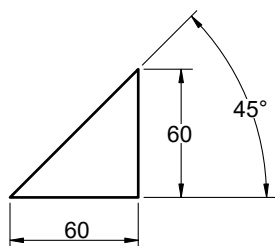
Die mounted cam for pierce and flange



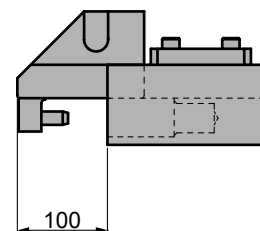
LKCM 0150 60



Cam diagram:



Disassembling space:





LKCM 0150 - LKBM 0150

Die mounted cam for pierce and flange


Working force kN - (tons)		Spring Force N - (kgf)		Weight (Kg)	Model	W (mm)	Stroke (mm)
(1 Million Strokes)	(300.000 Strokes)	Initial F ₀	Final F ₁				
58.8 (6.0)	88.2 (9.0)	330.2 (33.8)	1867.3 (189.8)	69.0	LKCM	0150	60
					LKBM		



Order: Model (W) (Stroke)
LKCM 0150 60

Standard order example according to catalog sheet.
 Add options applying options table contents.

OPTIONS

	<p>P PINS</p>  <p>P16 - Ø16 H7</p>

Order Options: Model (W) (Stroke) -Option



LKCM 0150 60-P16

LKBM 0150 60-P16



SPARE PARTS:

- ⑧ Coil Spring
- ⑪ Sliding plate 1
- ⑫ Sliding plate 2
- ⑬ Sliding plate 3

COMPONENTS

No.	Description	Qty.	Material
①	Cam Driver	1	GGG50 + G
②	Cam Slider	1	GGG50 + G
③	Cam Holder	1	GG25
④	Upper Plate	2	GG25
⑤	Stopper Plate	1	CK45
⑥	Positive Return	1	CK45
⑦	Spring Guide	2	CK45
⑧	Coil Spring	2	TF35-150
⑨	Screw	8	M16 x 45
⑩	Screw	2	M8 x 30
*⑪	Sliding plate 1	2	Bronze + G
*⑫	Sliding plate 2	2	Bronze + G
*⑬	Sliding plate 3	2	CK45

LKCM 0150 - LKBM 0150

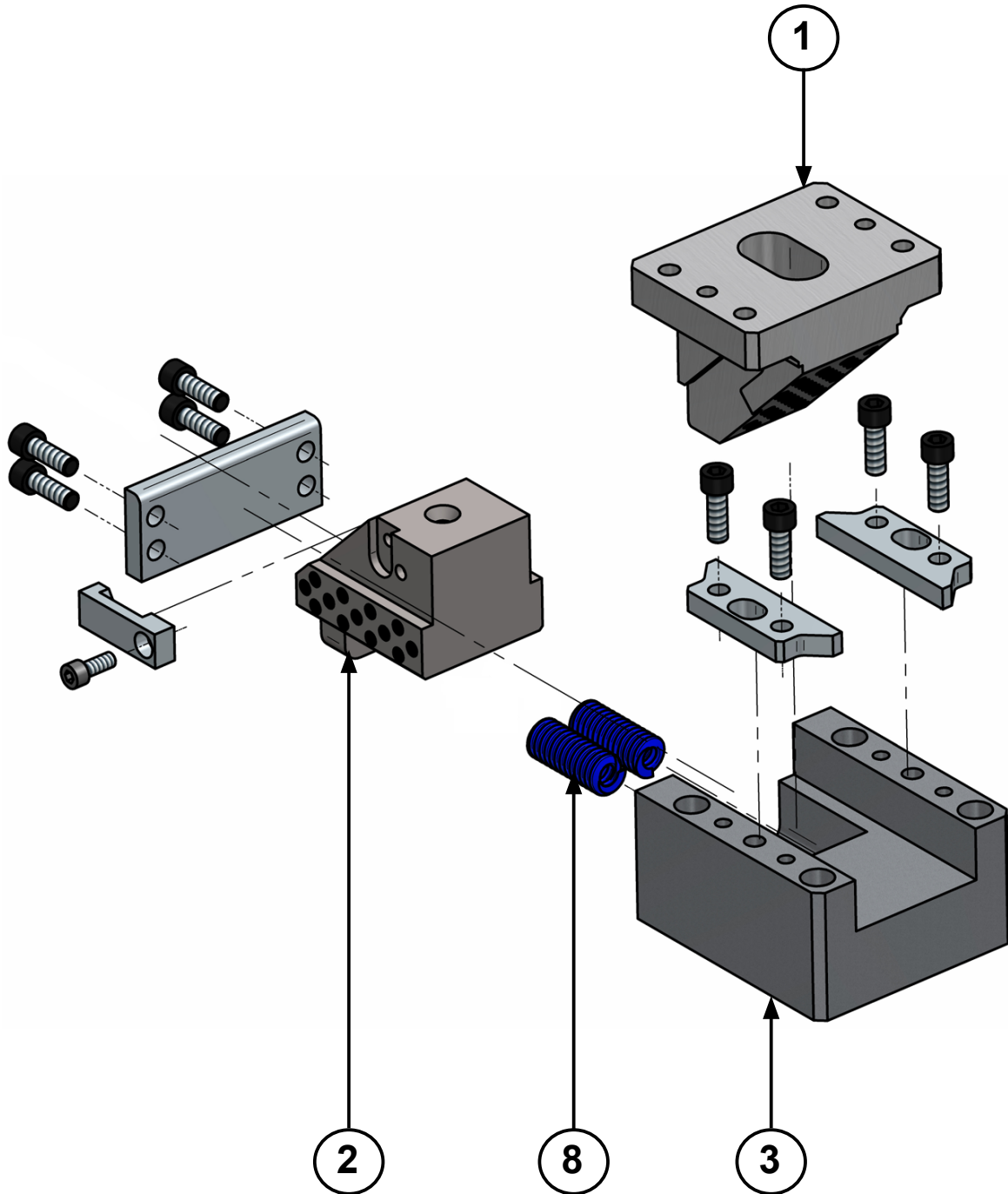


Die mounted cam for pierce and flange



LKCM 0200 - LKBM 0200

Die mounted cam for pierce and flange

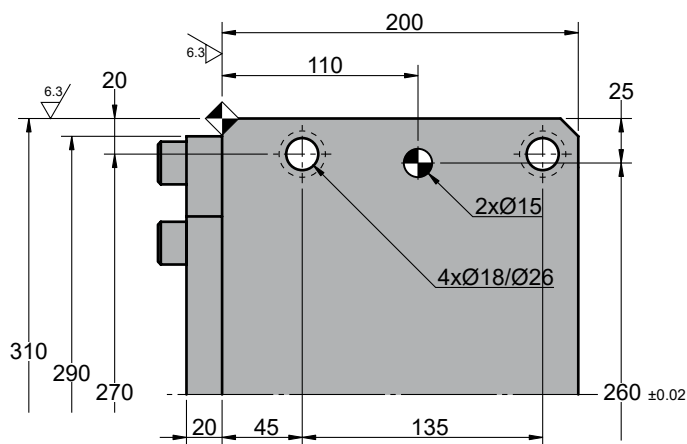
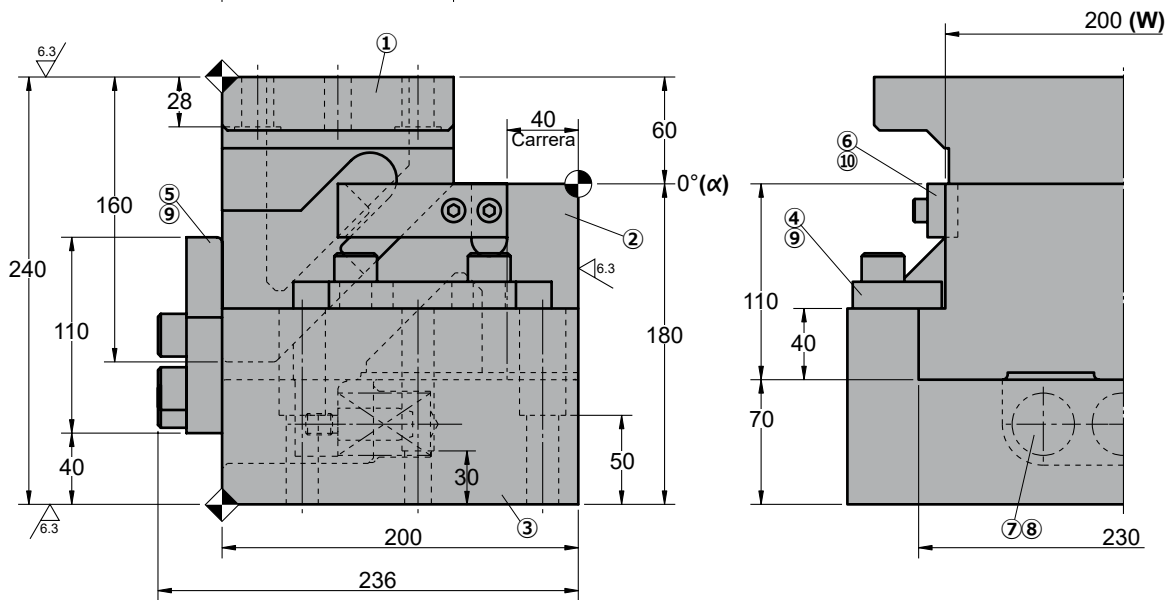
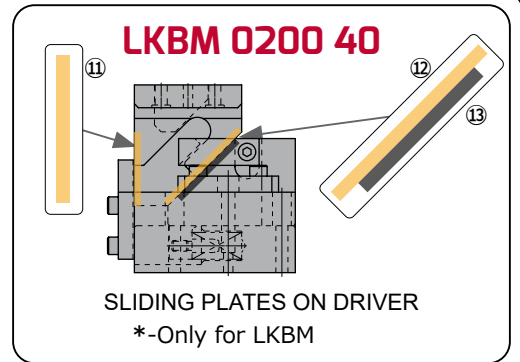
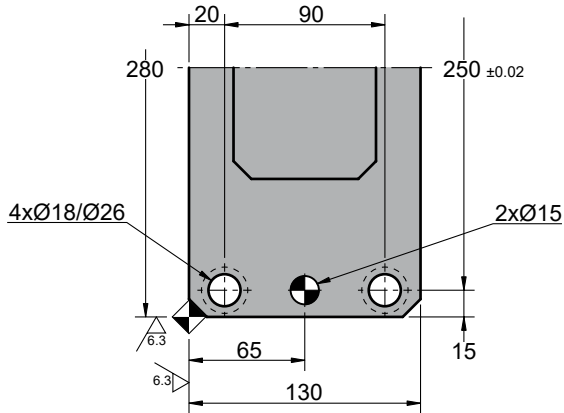


LKCM 0200 - LKBM 0200

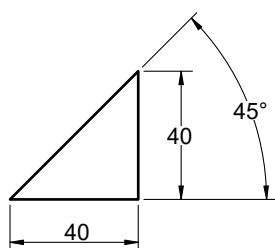
Die mounted cam for pierce and flange



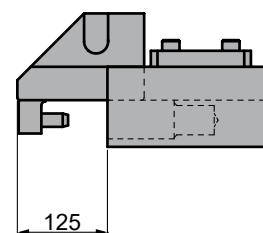
LKCM 0200 40



Cam diagram:



Disassembling space:





LKCM 0200 - LKBM 0200

Die mounted cam for pierce and flange


Working force kN - (tons)		Spring Force N - (kgf)		Weight (Kg)	Model	W (mm)	Stroke (mm)
(1 Million Strokes)	(300.000 Strokes)	Initial F ₀	Final F ₁				
78.4 (8.0)	117.6 (12.0)	460.8 (47.0)	2761.9 (282.2)	82.0	LKCM LKBM	0200	40



Order: Model (W) (Stroke)
LKCM 0200 40

Standard order example according to catalog sheet.
 Add options applying options table contents.

OPTIONS

	<p>P PINS</p>  <p>P16 - Ø16 H7</p>

Order Options: Model (W) (Stroke) -Option



LKCM 0200 40-P16

LKBM 0200 40-P16



SPARE PARTS:

- ⑧ Coil Spring
- ⑪ Sliding plate 1
- ⑫ Sliding plate 2
- ⑬ Sliding plate 3

COMPONENTS

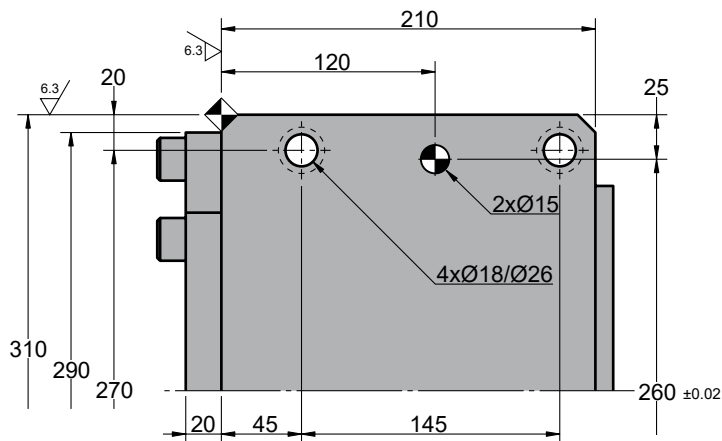
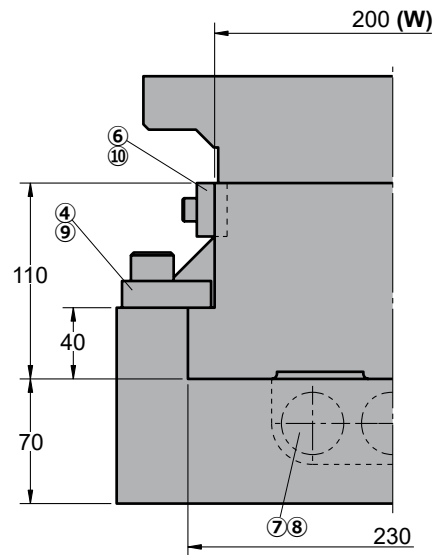
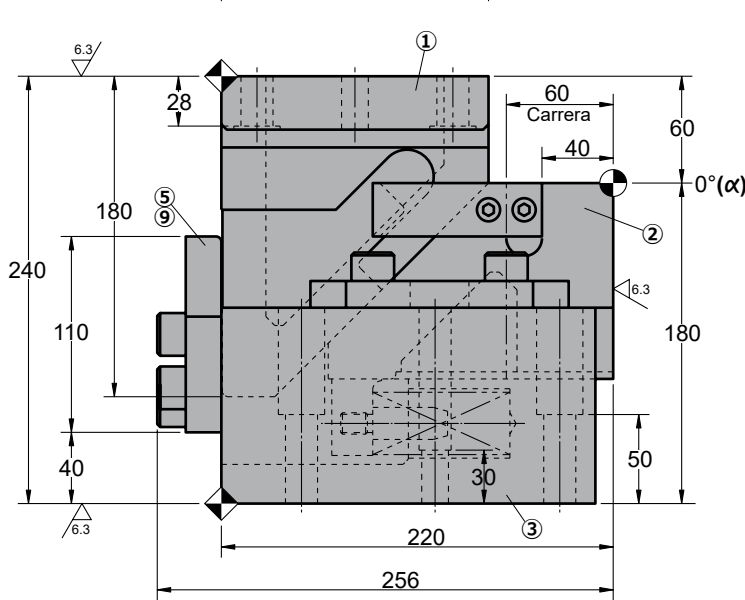
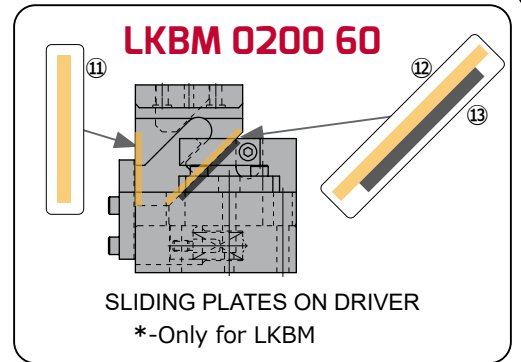
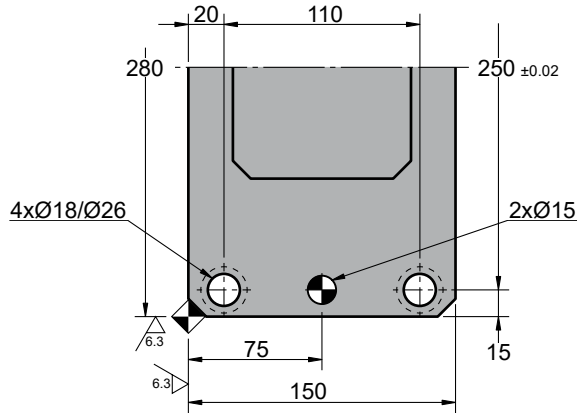
No.	Description	Qty.	Material
①	Cam Driver	1	GGG50 + G
②	Cam Slider	1	GGG50 + G
③	Cam Holder	1	GG25
④	Upper Plate	2	GG25
⑤	Stopper Plate	1	CK45
⑥	Positive Return	2	CK45
⑦	Spring Guide	3	CK45
⑧	Coil Spring	3	TF35-100
⑨	Screw	10	M16 x 45
⑩	Screw	4	M8 x 30
*⑪	Sliding plate 1	2	Bronze + G
*⑫	Sliding plate 2	2	Bronze + G
*⑬	Sliding plate 3	2	CK45

LKCM 0200 - LKBM 0200

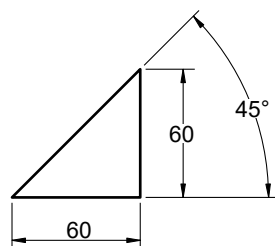
Die mounted cam for pierce and flange



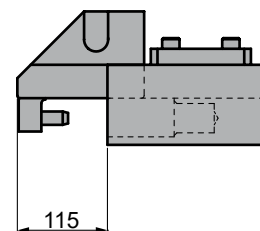
LKCM 0200 60



Cam diagram:



Disassembling space:





LKCM 0200 - LKBM 0200

Die mounted cam for pierce and flange


Working force kN - (tons)		Spring Force N - (kgf)		Weight (Kg)	Model	W (mm)	Stroke (mm)
(1 Million Strokes)	(300.000 Strokes)	Initial F ₀	Final F ₁				
78.4 (8.0)	117.6 (12.0)	495.3 (50.7)	2801.0 (284.7)	84.0	LKCM LKBM	0200	60



Order: Model (W) (Stroke)
LKCM 0200 60

Standard order example according to catalog sheet.
 Add options applying options table contents.

OPTIONS

	<p>P PINS</p>  <p>P16 - Ø16 H7</p>

Order Options: Model (W) (Stroke) -Option



LKCM 0200 60-P16
LKBM 0200 60-P16



SPARE PARTS:

- ⑧ Coil Spring
- ⑪ Sliding plate 1
- ⑫ Sliding plate 2
- ⑬ Sliding plate 3

COMPONENTS

No.	Description	Qty.	Material
①	Cam Driver	1	GGG50 + G
②	Cam Slider	1	GGG50 + G
③	Cam Holder	1	GG25
④	Upper Plate	2	GG25
⑤	Stopper Plate	1	CK45
⑥	Positive Return	2	CK45
⑦	Spring Guide	3	CK45
⑧	Coil Spring	3	TF35-150
⑨	Screw	10	M16 x 45
⑩	Screw	4	M8 x 30
*⑪	Sliding plate 1	2	Bronze + G
*⑫	Sliding plate 2	2	Bronze + G
*⑬	Sliding plate 3	2	CK45

LKCM 0200 - LKBM 0200

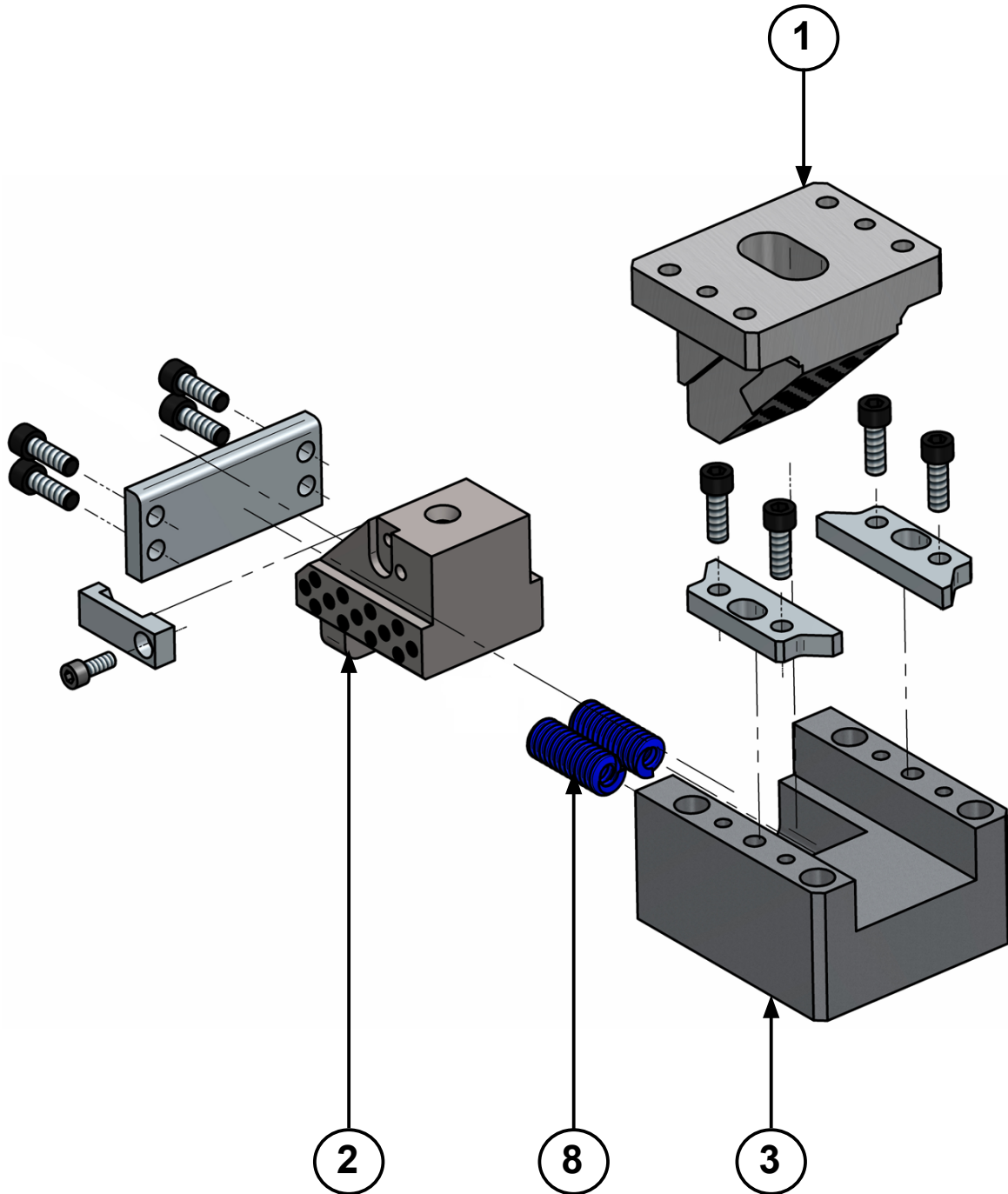


Die mounted cam for pierce and flange



LKCM 0250 - LKBM 0250

Die mounted cam for pierce and flange

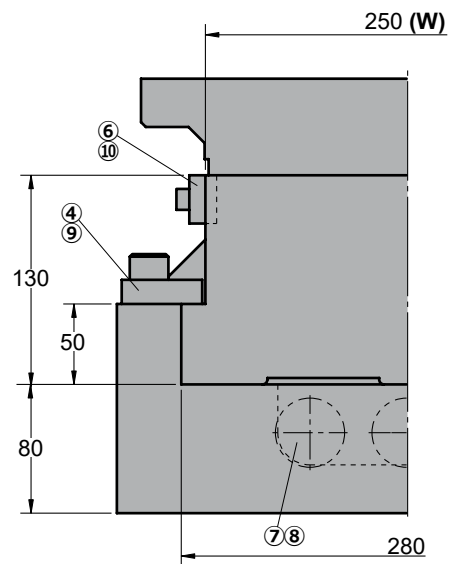
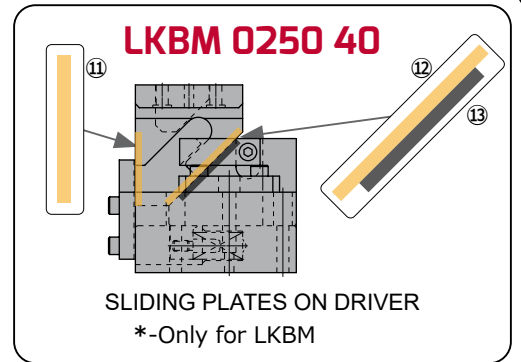
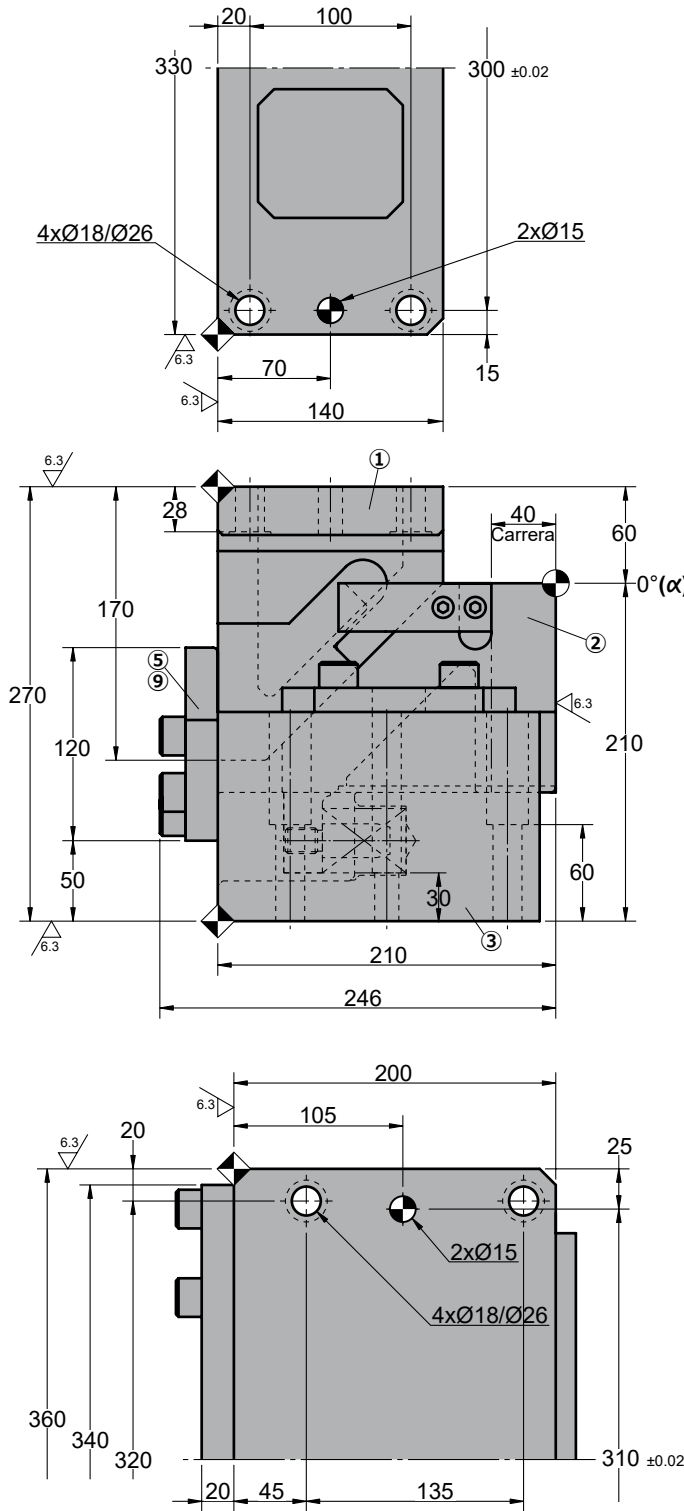


LKCM 0250 - LKBM 0250

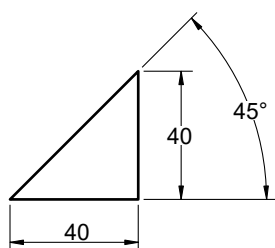
Die mounted cam for pierce and flange



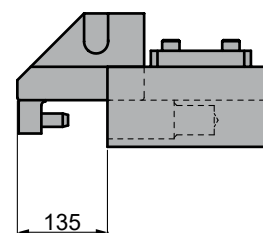
LKCM 0250 40



◦Cam diagram:



◦Disassembling space:





LKCM 0250 - LKBM 0250

Die mounted cam for pierce and flange


Working force kN - (tons)		Spring Force N - (kgf)		Weight (Kg)	Model	W (mm)	Stroke (mm)
(1 Million Strokes)	(300.000 Strokes)	Initial F ₀	Final F ₁				
98.0 (10.0)	147.0 (15.0)	602.4 (61.4)	3610.1 (368.6)	106.0	LKCM LKBM	0250	40



Order: Model (W) (Stroke)
LKCM 0250 40

Standard order example according to catalog sheet.
 Add options applying options table contents.

OPTIONS

	<p>P PINS</p>  <p>P16 - Ø16 H7</p>

Order Options: Model (W) (Stroke) -Option



LKCM 0250 40-P16

LKBM 0250 40-P16



SPARE PARTS:

- ⑧ Coil Spring
- ⑪ Sliding plate 1
- ⑫ Sliding plate 2
- ⑬ Sliding plate 3

COMPONENTS

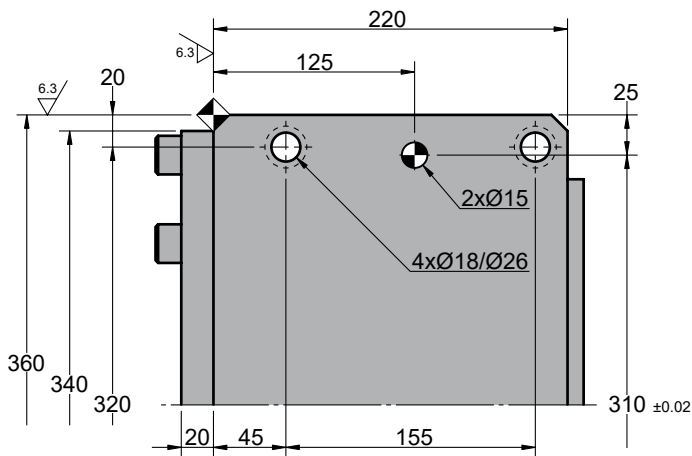
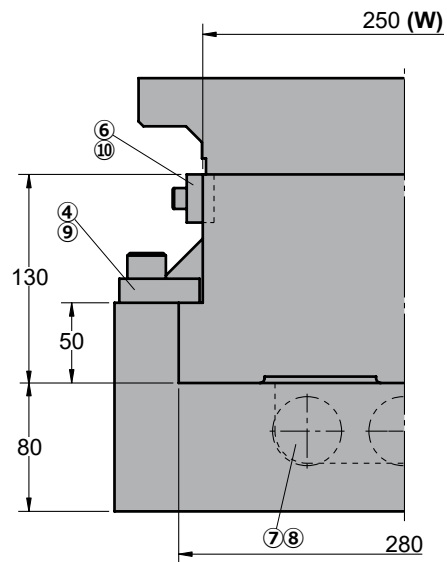
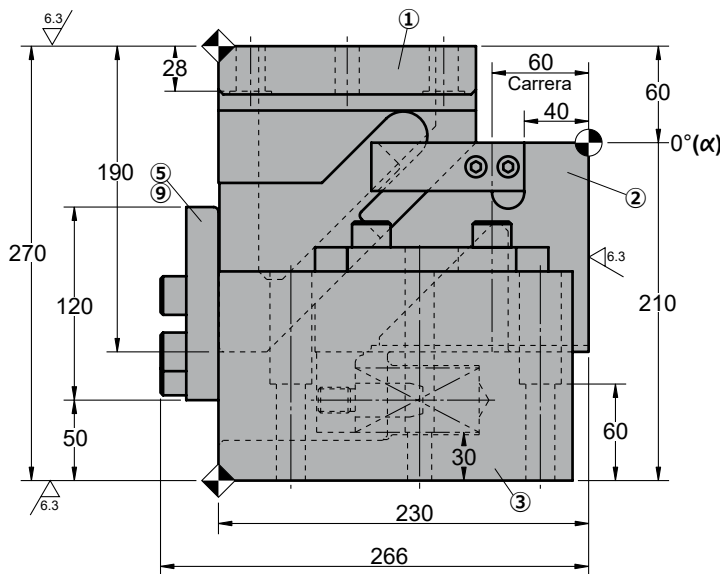
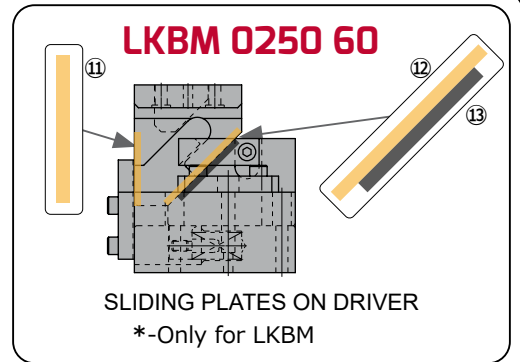
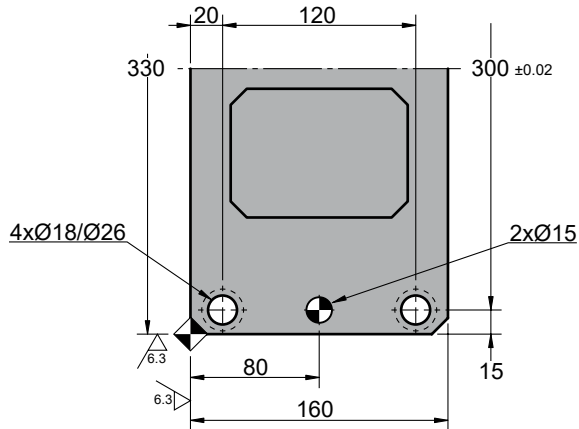
No.	Description	Qty.	Material
①	Cam Driver	1	GGG50 + G
②	Cam Slider	1	GGG50 + G
③	Cam Holder	1	GG25
④	Upper Plate	2	GG25
⑤	Stopper Plate	1	CK45
⑥	Positive Return	2	CK45
⑦	Spring Guide	3	CK45
⑧	Coil Spring	3	TF40-100
⑨	Screw	10	M16 x 45
⑩	Screw	4	M8 x 30
*⑪	Sliding plate 1	2	Bronze + G
*⑫	Sliding plate 2	2	Bronze + G
*⑬	Sliding plate 3	2	CK45

LKCM 0250 - LKBM 0250

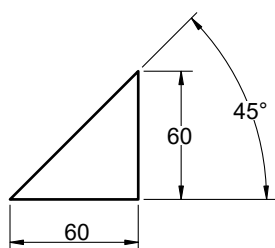
Die mounted cam for pierce and flange



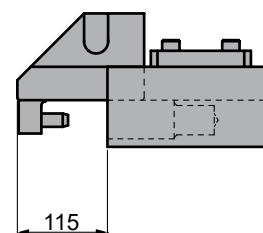
LKCM 0250 60



Cam diagram:



Disassembling space:





LKCM 0250 - LKBM 0250

Die mounted cam for pierce and flange

Working force kN - (tons)		Spring Force N - (kgf)		Weight (Kg)	Model	W (mm)	Stroke (mm)
(1 Million Strokes)	(300.000 Strokes)	Initial F ₀	Final F ₁				
98.0 (10.0)	147.0 (15.0)	651.3 (66.3)	3659.4 (372.3)	127.0	LKCM LKBM	0250	60

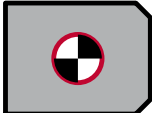


Order: Model (W) (Stroke)

LKCM 0250 60

Standard order example according to catalog sheet. Add options applying options table contents.

OPTIONS

	<p>P PINS</p>  <p>P16 - Ø16 H7</p>

Order Options: Model (W) (Stroke) -Option



LKCM 0250 60-P16

LKBM 0250 60-P16



SPARE PARTS:

- ⑧ Coil Spring
- ⑪ Sliding plate 1
- ⑫ Sliding plate 2
- ⑬ Sliding plate 3

COMPONENTS

No.	Description	Qty.	Material
①	Cam Driver	1	GGG50 + G
②	Cam Slider	1	GGG50 + G
③	Cam Holder	1	GG25
④	Upper Plate	2	GG25
⑤	Stopper Plate	1	CK45
⑥	Positive Return	2	CK45
⑦	Spring Guide	3	CK45
⑧	Coil Spring	3	TF40-150
⑨	Screw	10	M16 x 45
⑩	Screw	4	M8 x 30
*⑪	Sliding plate 1	2	Bronze + G
*⑫	Sliding plate 2	2	Bronze + G
*⑬	Sliding plate 3	2	CK45

LKCM 0250 - LKBM 0250

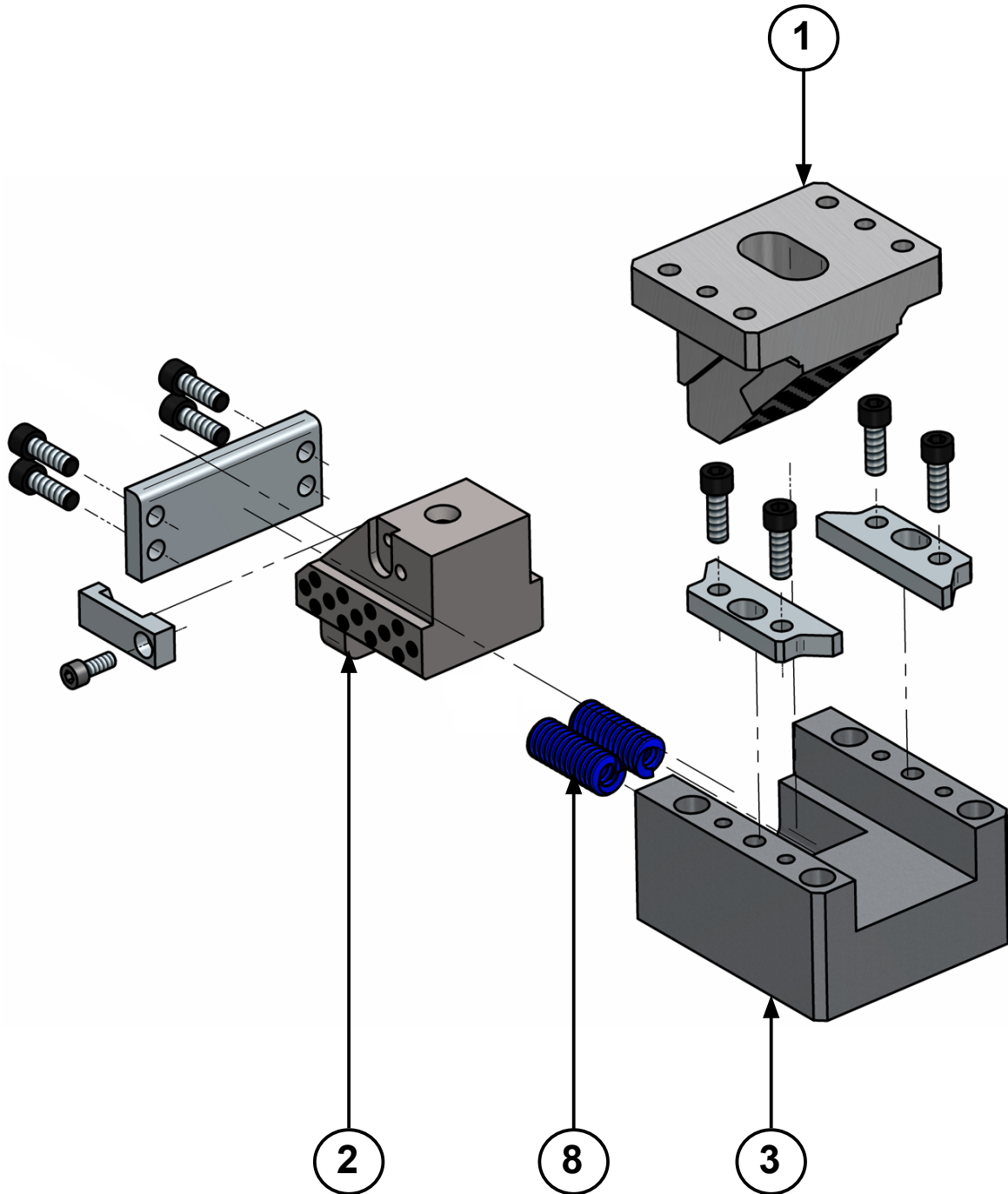


Die mounted cam for pierce and flange



LKCM 0300 - LKBM 0300

Die mounted cam for pierce and flange

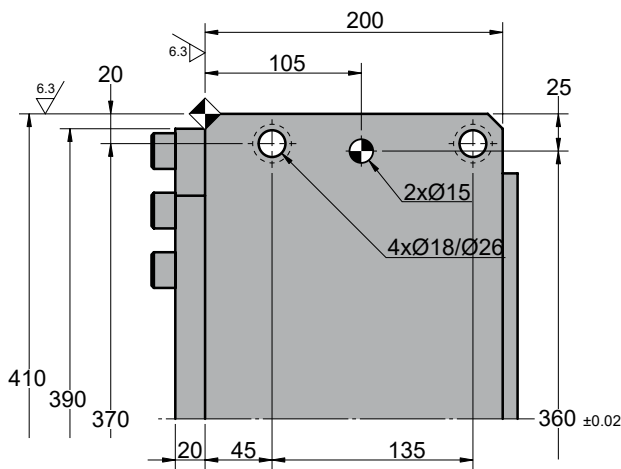
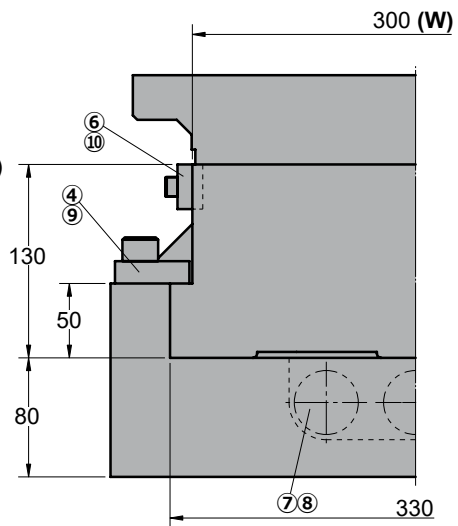
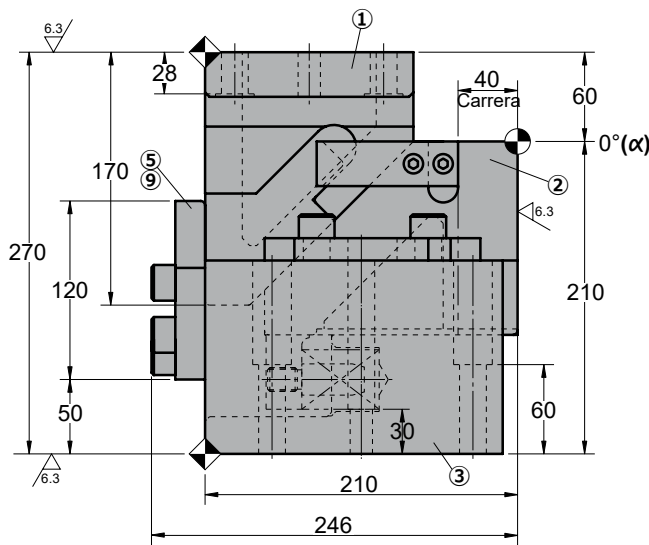
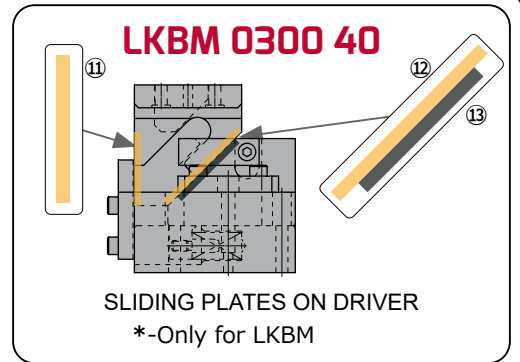
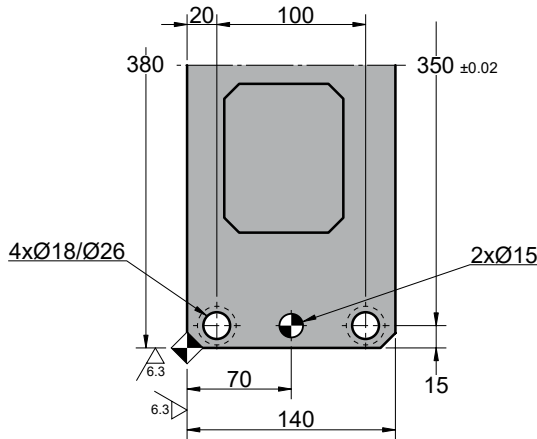


LKCM 0300 - LKBM 0300

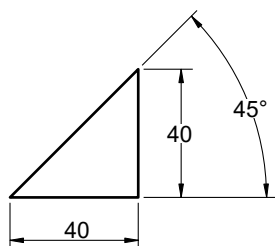
Die mounted cam for pierce and flange



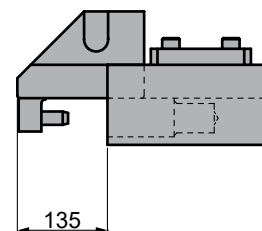
LKCM 0300 40



Cam diagram:



Disassembling space:





LKCM 0300 - LKBM 0300

Die mounted cam for pierce and flange


Working force kN - (tons)		Spring Force N - (kgf)		Weight (Kg)	Model	W (mm)	Stroke (mm)
(1 Million Strokes)	(300.000 Strokes)	Initial F ₀	Final F ₁				
117.6 (12.0)	176.4 (18.0)	602.4 (61.4)	3610.1 (368.6)	106.0	LKCM LKBM	300	40



Order: Model (W) (Stroke)
LKCM 0300 40

Standard order example according to catalog sheet.
 Add options applying options table contents.

OPCIONES

	<p>P PINS</p>  <p>P16 - Ø16 H7</p>

Order Options: Model (W) (Stroke) -Option



LKCM 0300 40-P16

LKBM 0300 40-P16



SPARE PARTS:

- ⑧ Coil Spring
- ⑪ Sliding plate 1
- ⑫ Sliding plate 2
- ⑬ Sliding plate 3

COMPONENTS

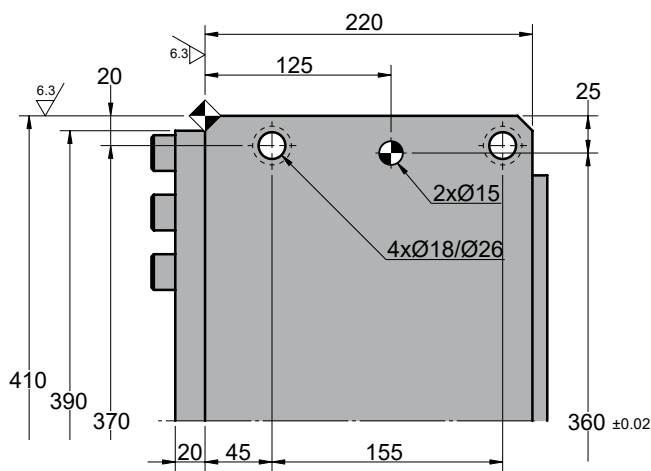
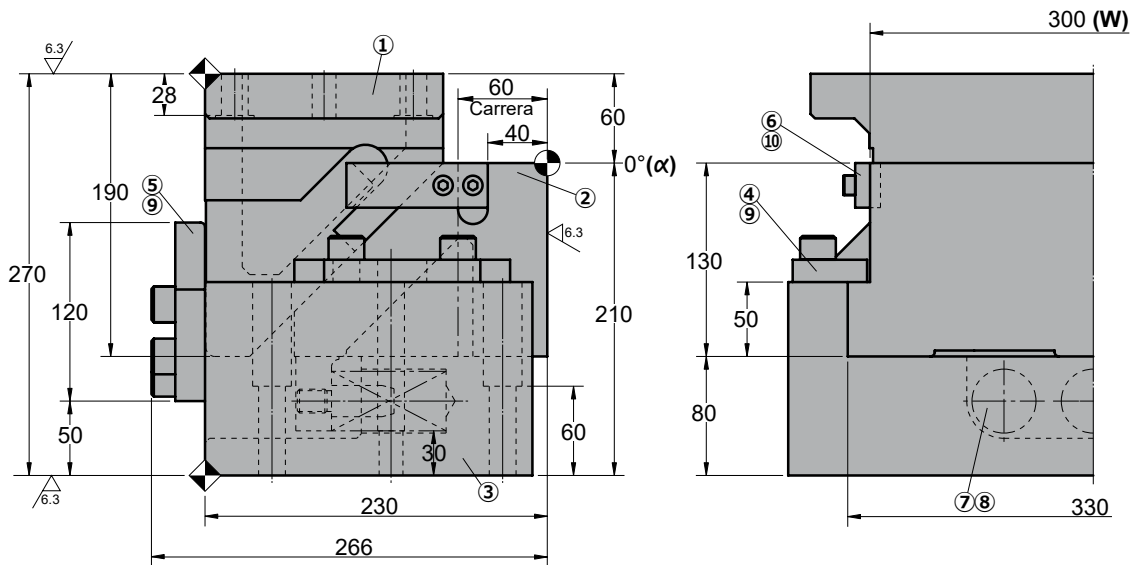
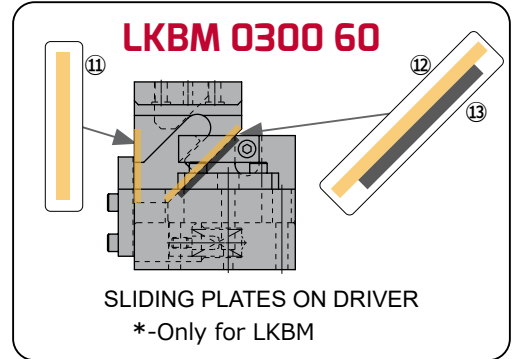
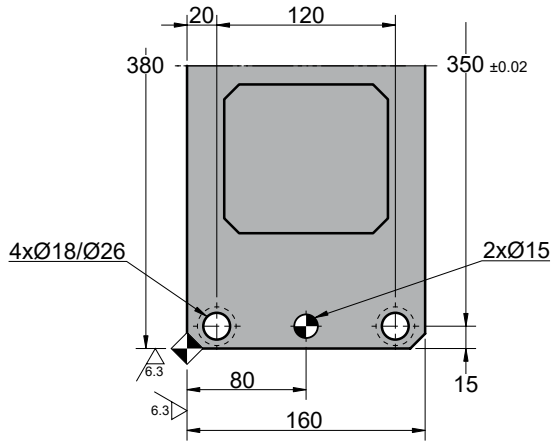
No.	Description	Qty.	Material
①	Cam Driver	1	GGG50 + G
②	Cam Slider	1	GGG50 + G
③	Cam Holder	1	GG25
④	Upper Plate	2	GG25
⑤	Stopper Plate	1	CK45
⑥	Positive Return	2	CK45
⑦	Spring Guide	3	CK45
⑧	Coil Spring	3	TF40-100
⑨	Screw	12	M16 x 45
⑩	Screw	4	M8 x 30
*⑪	Sliding plate 1	2	Bronze + G
*⑫	Sliding plate 2	2	Bronze + G
*⑬	Sliding plate 3	2	CK45

LKCM 0300 - LKBM 0300

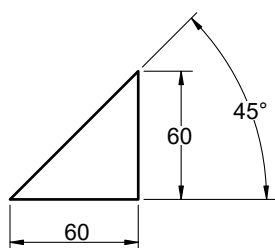
Die mounted cam for pierce and flange



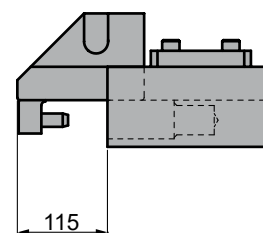
LKCM 0300 60



◦Cam diagram:



◦Disassembling space:





LKCM 0300 - LKBM 0300

Die mounted cam for pierce and flange


Working force kN - (tons)		Spring Force N - (kgf)		Weight (Kg)	Model	W (mm)	Stroke (mm)
(1 Million Strokes)	(300.000 Strokes)	Initial F ₀	Final F ₁				
117.6 (12.0)	176.4 (18.0)	651.3 (66.3)	3659.4 (372.3)	128.0	LKCM LKBM	300	60



Order: Model (W) (Stroke)
LKCM 0300 60

Standard order example according to catalog sheet.
 Add options applying options table contents.

OPCIONES

	<p>P PINS</p>  <p>P16 - Ø16 H7</p>

Order Options: Model (W) (Stroke) -Option



LKCM 0300 60-P16

LKBM 0300 60-P16



SPARE PARTS:

- ⑧ Coil Spring
- ⑪ Sliding plate 1
- ⑫ Sliding plate 2
- ⑬ Sliding plate 3

COMPONENTS

No.	Description	Qty.	Material
①	Cam Driver	1	GGG50 + G
②	Cam Slider	1	GGG50 + G
③	Cam Holder	1	GG25
④	Upper Plate	2	GG25
⑤	Stopper Plate	1	CK45
⑥	Positive Return	2	CK45
⑦	Spring Guide	3	CK45
⑧	Coil Spring	3	TF40-150
⑨	Screw	12	M16 x 45
⑩	Screw	4	M8 x 30
*⑪	Sliding plate 1	2	Bronze + G
*⑫	Sliding plate 2	2	Bronze + G
*⑬	Sliding plate 3	2	CK45

LKCM 0300 - LKBM 0300

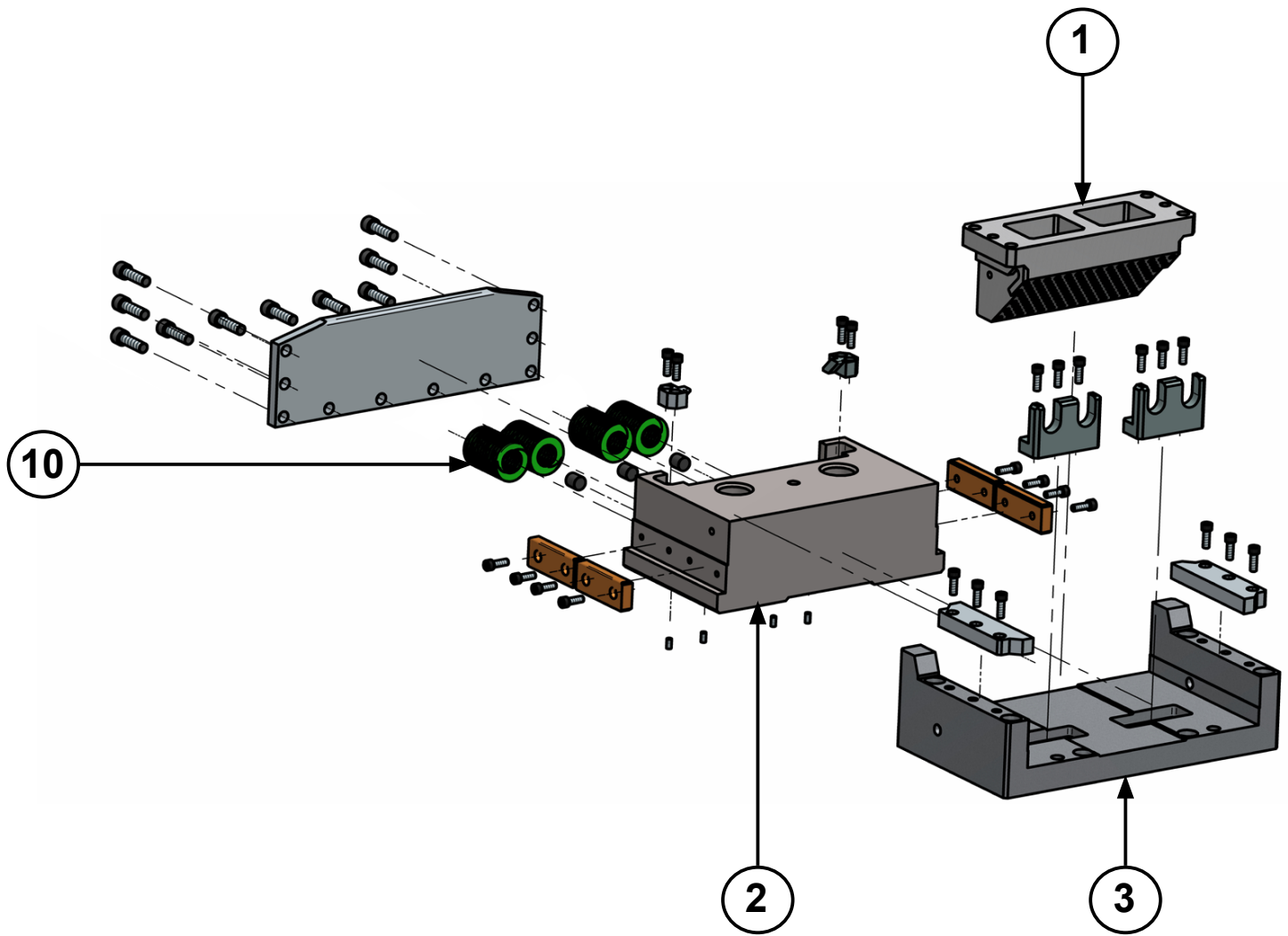


Die mounted cam for pierce and flange



LKCM 0400-0500-0600 - LKBM 0400

Die mounted cam for pierce and flange

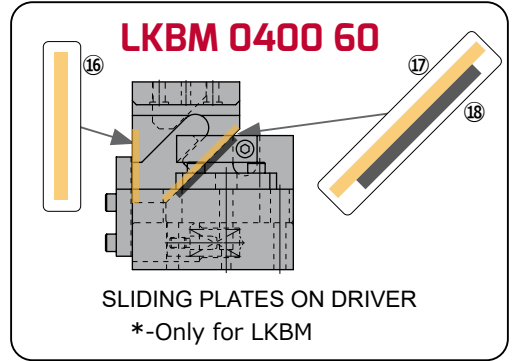
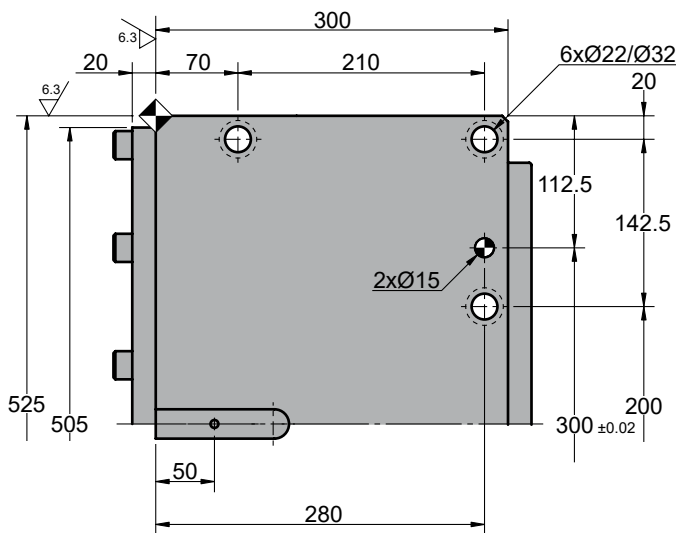
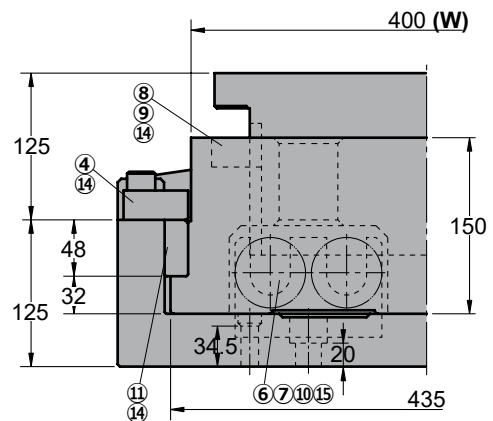
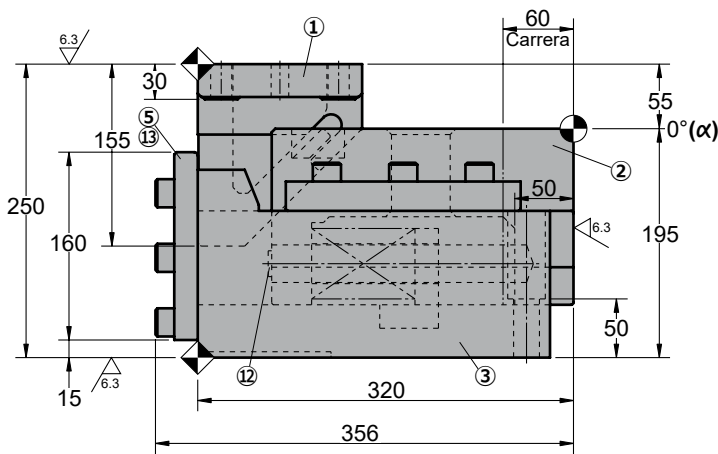
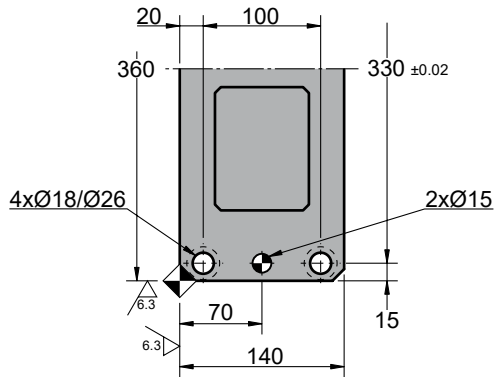


LKCM 0400 - LKBM 0400

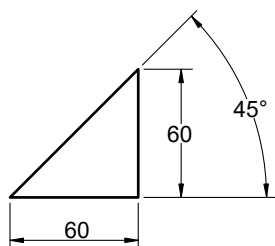
Die mounted cam for pierce and flange



LKCM 0400 60



◦Cam diagram:



◦Disassembling space:



LKCM 0400 - LKBM 0400

Die mounted cam for pierce and flange

Working force kN - (tons)		Spring Force N - (kgf)		Weight (Kg)	Model	W (mm)	Stroke (mm)
(1 Million Strokes)	(300.000 Strokes)	Initial F ₀	Final F ₁				
137.2 (14.0)	205.8 (21.0)	301.6 (30.7)	9332.2 (952.3)	203.0	LKCM	0400	60
					LKBM		

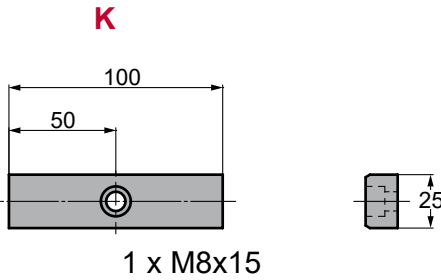


Order: Model (W) (Stroke)
LKCM 0400 60

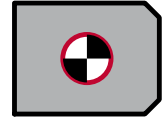
Standard order example according to catalog sheet.
 Add options applying options table contents.

OPTIONS

K KEY



P PINS



P16 - Ø16 H7

Order Options: Model (W) (Stroke) -Option



- LKCM 0400 60-K**
- LKCM 0400 60-P16**
- LKCM 0400 60-K-P16**
- LKBM 0400 60-K**



SPARE PARTS:

- ⑩ Coil Spring
- ⑯ Sliding Plate 1*
- ⑰ Sliding Plate 2*
- ⑱ Sliding Plate 3*

COMPONENTS

No.	Description	Qty.	Material
①	Cam Driver	1	GGG25 + G
②	Cam Slider	1	GGG25 + G
③	Cam Holder	1	GG25
④	Upper Plate	2	GGG25 + G
⑤	Stopper Plate	1	CK45
⑥	Spring Spacer	2	CK45
⑦	Spring Guide	4	CK45
⑧	Positive Return-1	1	CK45
⑨	Positive Return-2	1	CK45
⑩	Coil Spring	4	TF60-150 (Tohatsu)
⑪	Guide Plate	4	GG25 + G (48x125x20)
⑫	Stopper	3	Goma
⑬	Screw	16	M16 x 55
⑭	Screw	18	M10 x 30
⑮	Dowel Pin	4	Ø10 x 60

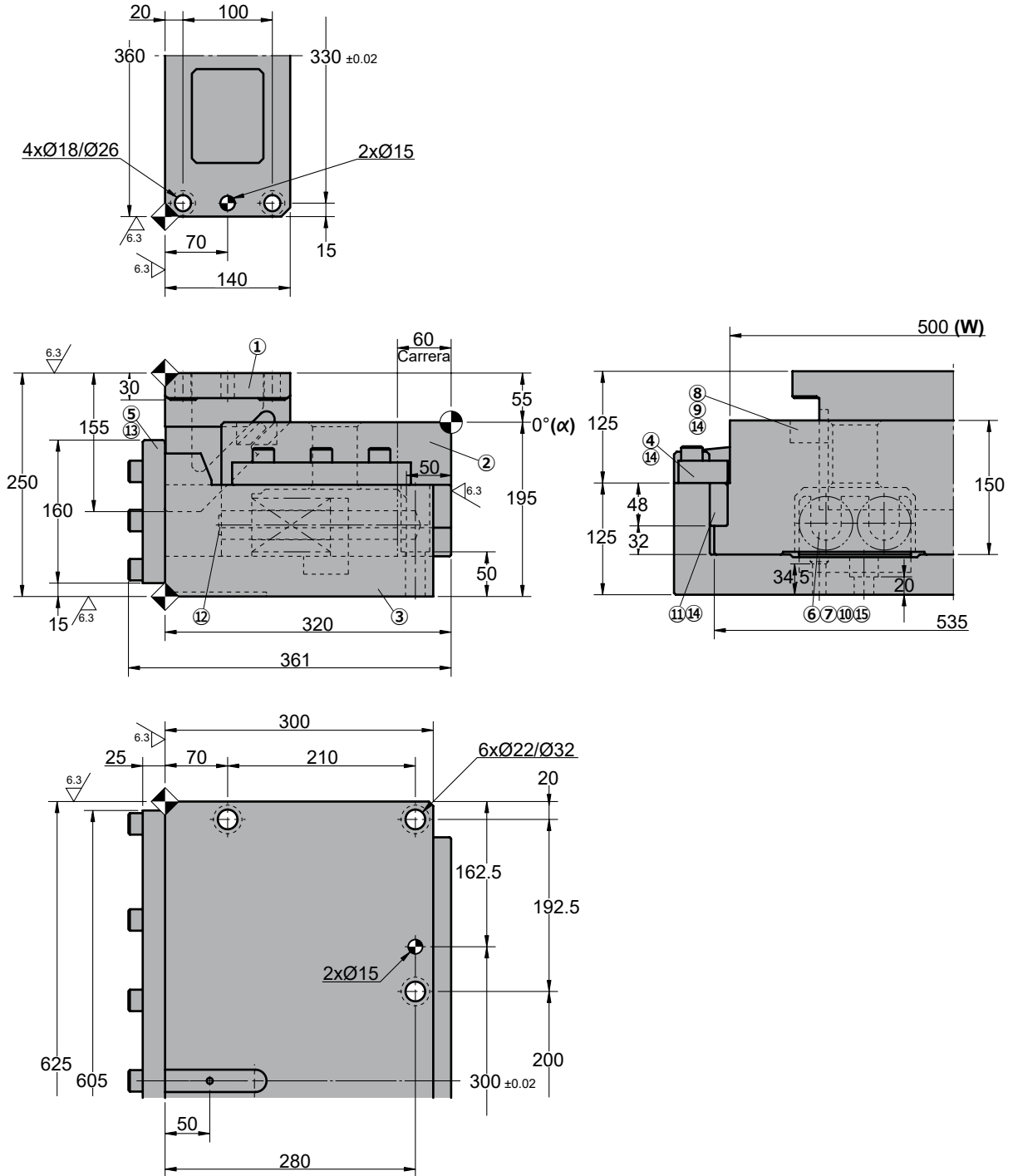
No.	Description	Qty.	Material
*⑯	Sliding Plate 1	2	Bronze + G
*⑰	Sliding plate 2	2	Bronze + G
*⑱	Sliding plate 3	2	CK45

LKCM 0500

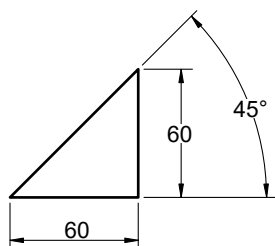
Die mounted cam for pierce and flange



LKCM 0500 60



◦Cam diagram:



◦Disassembling space:



LKCM 0500

Die mounted cam for pierce and flange

Working force kN - (tons)		Spring Force N - (kgf)		Weight (Kg)	Model	W (mm)	Stroke (mm)
(1 Million Strokes)	(300.000 Strokes)	Initial F ₀	Final F ₁				
137.2 (14.0)	205.8 (21.0)	301.6 (30.7)	9332.2 (952.3)	237.0	LKCM	0500	60



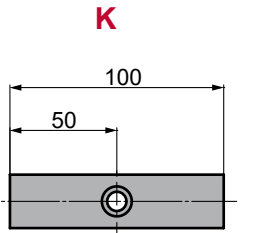
Order: Model (W) (Stroke)
LKCM 0500 60

Standard order example according to catalog sheet.
 Add options applying options table contents.

OPTIONS

K

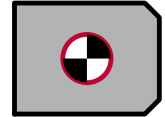
KEY



1 x M8x15



P PINS



P16 - Ø16 H7

Order Options: Model (W) (Stroke) -Option



LKCM 0500 60-K

LKCM 0500 60-P16

LKCM 0500 60-K-P16



SPARE PARTS:

⑩ Coil Spring

COMPONENTS

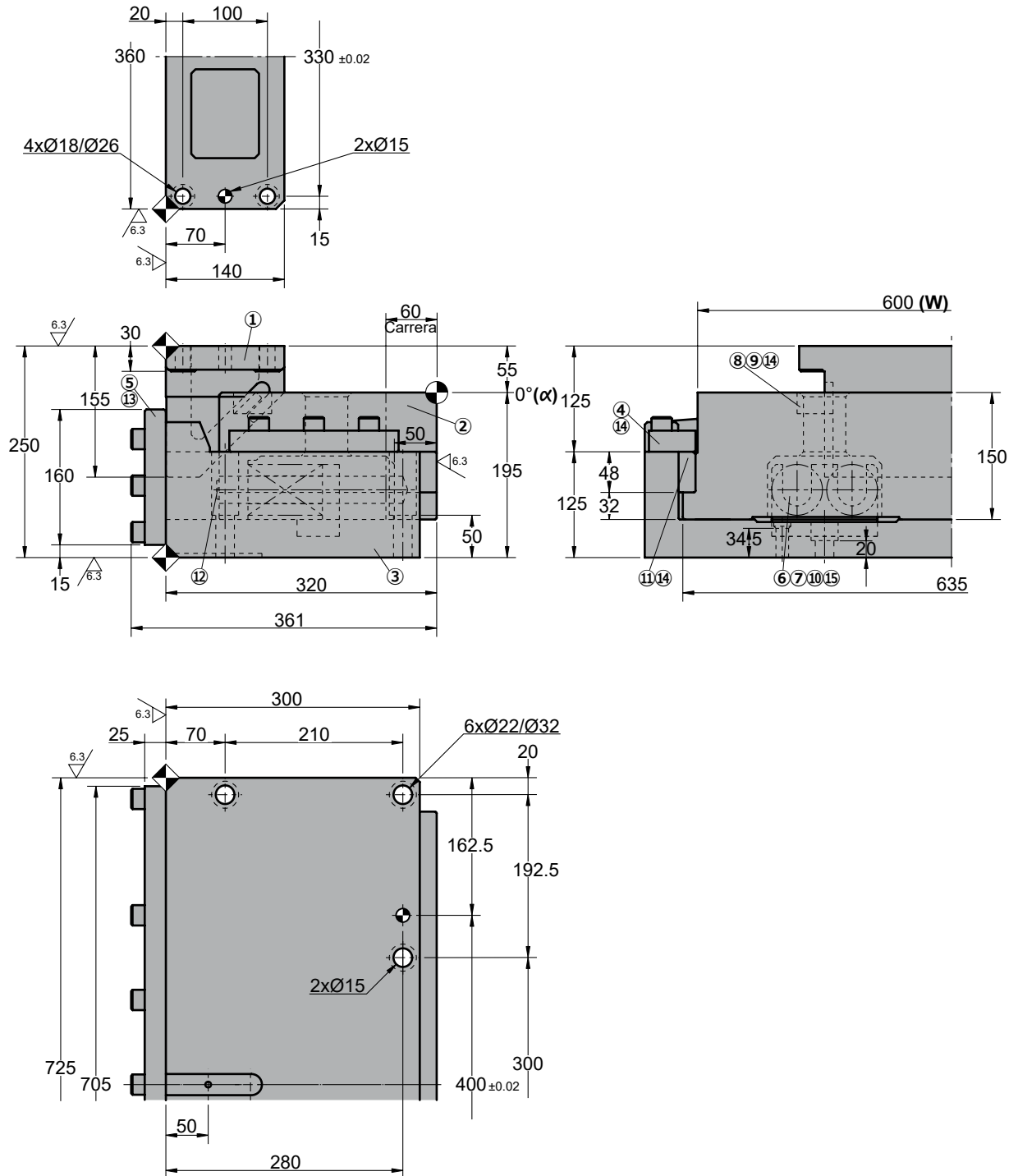
No.	Description	Qty.	Material
①	Cam Driver	1	GGG25 + G
②	Cam Slider	1	GGG25 + G
③	Cam Holder	1	GG25
④	Upper Plate	2	GGG25 + G
⑤	Stopper Plate	1	CK45
⑥	Spring Spacer	2	CK45
⑦	Spring Guide	4	CK45
⑧	Positive Return-1	1	CK45
⑨	Positive Return-2	1	CK45
⑩	Coil Spring	4	TF60-150 (Tohatsu)
⑪	Guide Plate	4	GG25 + G (48x125x20)
⑫	Stopper	5	Goma
⑬	Screw	17	M16 x 45
⑭	Screw	18	M10 x 30
⑮	Dowel Pin	4	Ø10 x 60

LKCM 0600

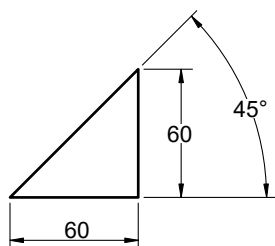
Die mounted cam for pierce and flange



LKCM 0600 60



◦Cam diagram:



◦Disassembling space:



LKCM 0600

Die mounted cam for pierce and flange

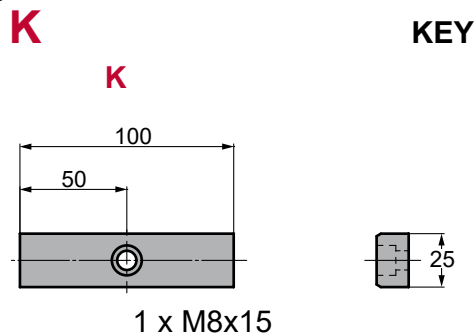
Working force kN - (tons)		Spring Force N - (kgf)		Weight (Kg)	Model	W (mm)	Stroke (mm)
(1 Million Strokes)	(300.000 Strokes)	Initial F ₀	Final F ₁				
137.2 (14.0)	205.8 (21.0)	301.6 (30.7)	9332.2 (952.3)	279.0	LKCM	0600	60



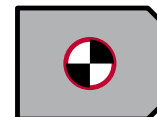
Order: Model (W) (Stroke)
LKCM 0600 60

Standard order example according to catalog sheet.
 Add options applying options table contents.

OPTIONS



P PINS



P16 - Ø16 H7

Order Options: Model (W) (Stroke) -Option



LKCM 0600 60-K
LKCM 0600 60-P16
LKCM 0600 60-K-P16



SPARE PARTS:

⑩ Coil Spring

COMPONENTS

No.	Description	Qty.	Material
①	Cam Driver	1	GGG25 + G
②	Cam Slider	1	GGG25 + G
③	Cam Holder	1	GG25
④	Upper Plate	2	GGG25 + G
⑤	Stopper Plate	1	CK45
⑥	Spring Spacer	2	CK45
⑦	Spring Guide	4	CK45
⑧	Positive Return-1	1	CK45
⑨	Positive Return-2	1	CK45
⑩	Coil Spring	4	TF60-150 (Tohatsu)
⑪	Guide Plate	4	GG25 + G (48x125x20)
⑫	Stopper	5	Goma
⑬	Screw	17	M16 x 55
⑭	Screw	18	M10 x 30
⑮	Dowel Pin	4	Ø10 x 60

LKCM 0400-0500-0600 - LKBM 0400

Die mounted cam for pierce and flange